



University of the State of New York  
State Education Department

# 2011-12 Budget Presentation

Higher Education and the Professions



---

**David M. Steiner**

President of the University of the State of  
New York and Commissioner of Education

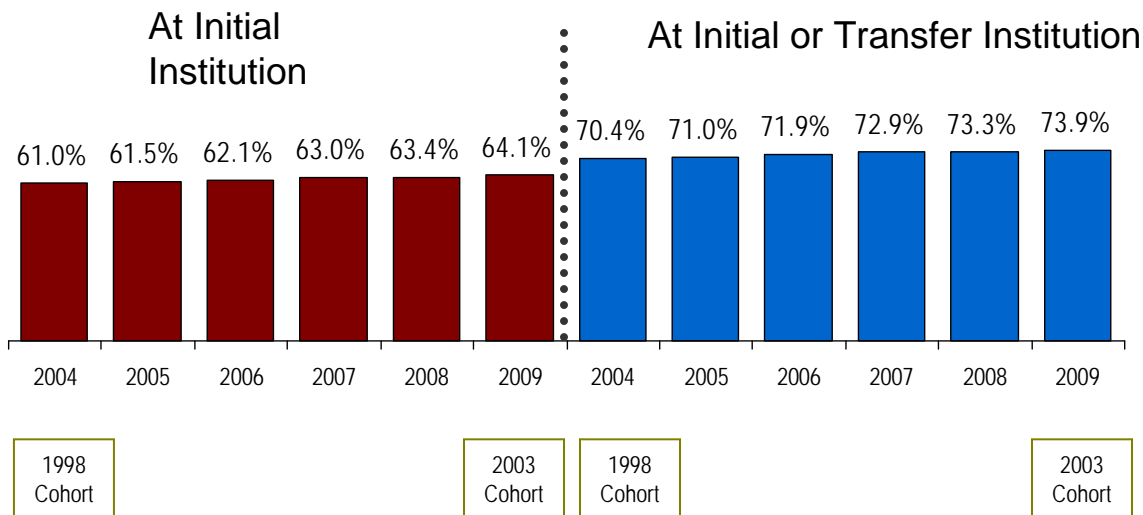
February 10, 2011

---

# College Graduation Rates

*Bachelor's degrees going in the right direction*

**Six-Year College Graduation Rate:  
Percent of Full-time, First-time Entrants Earning  
Baccalaureate Degrees**



Rising graduation rates consistently surpass U.S. average

6-Year Baccalaureate Graduation Rate At Initial Institution

	Black	Hispanic	All
2004	44%	43%	61%
2009	47%	50%	64%

Students with Disabilities Enrollment

1999: 30,593      2009: 44,529

- More students with disabilities; graduation rate improving
- Some progress in closing the performance gap

We can build on this record of success with college and career ready graduates.

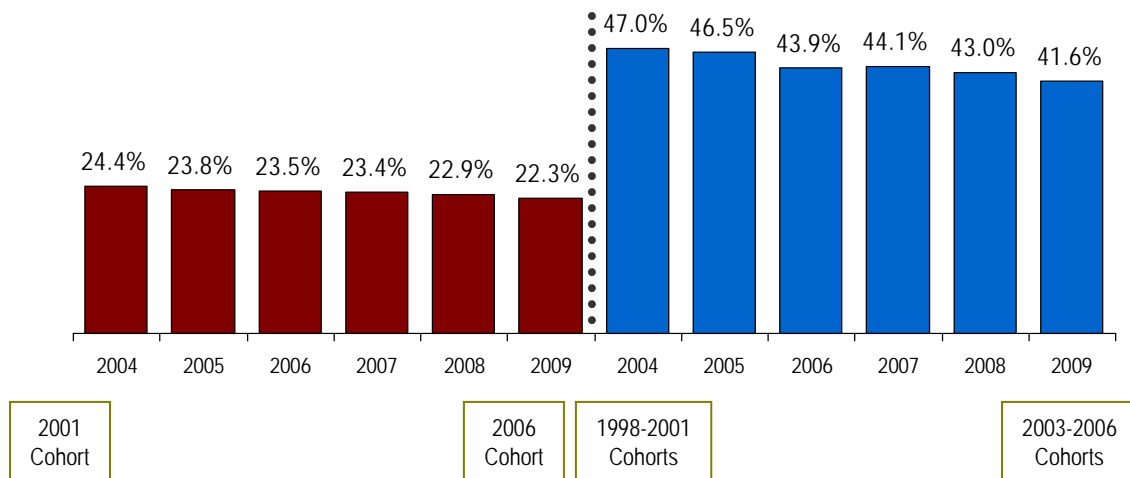
# College Graduation Rates

*Associate's degrees going in the wrong direction*

College Graduation Rate  
of Full-time, First-time Entrants to Associate Programs

Associate Degree within 3  
years at Initial Institution

Associate or Bachelor Degree within 6  
years at Initial or Transfer Institution



3-Year Associate Graduation Rate  
At Initial Institution

	Black	Hispanic	All
2004	16%	15%	25%
2009	14%	15%	22%

Students with Disabilities Enrollment

1999: 30,593      2009: 44,529

# Our Challenge: Graduating All Students College and Career Ready

New York's 4-year high school graduation rate is only 71.8% (all students) and 76.8% for General Education Students. And the gaps are disturbing.

## NYS Public School General Education Students June 2009 Graduation Rate

All students who started 9<sup>th</sup> grade in 2005, after 4 years

### Actual (Reported) Graduation

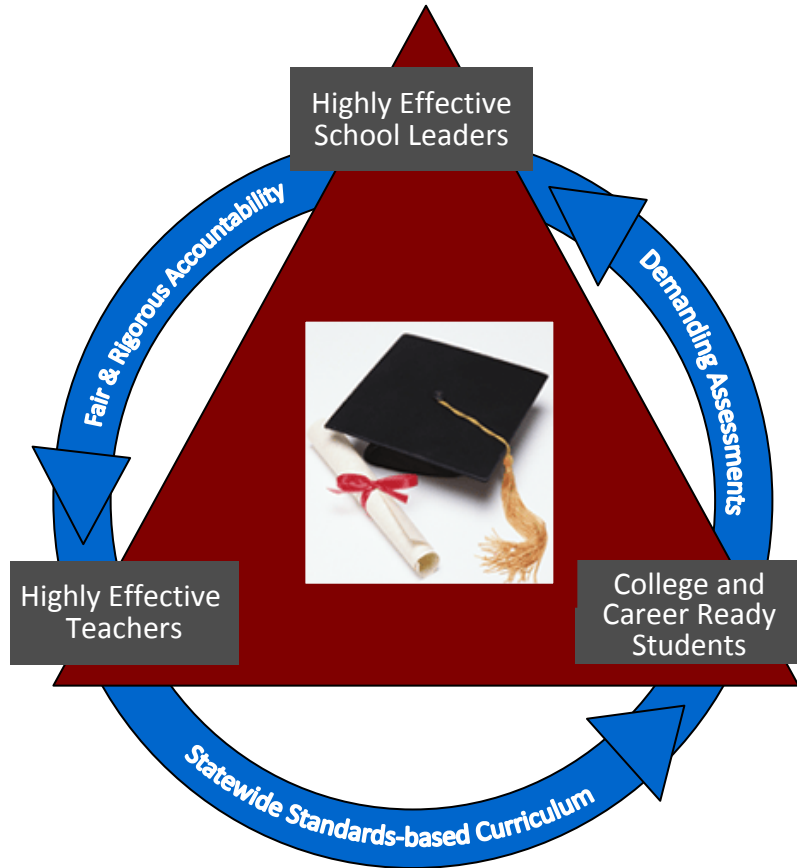
General Ed Students	% Graduating
<b>Total</b>	76.8
American Indian	62.7
Asian/Pacific Islander	82.0
Black	62.0
Hispanic	59.6
White	87.3
Students with Disabilities	42.1

### Calculated College and Career Readiness\*

General Ed Students	% Graduating
<b>Total</b>	40.8
American Indian	23.7
Asian/Pacific Islander	55.6
Black	15.2
Hispanic	16.8
White	56.2
Students with Disabilities	16.4

\*Students graduating with at least a score of 75 on Regents English and 80 on the Math Regents

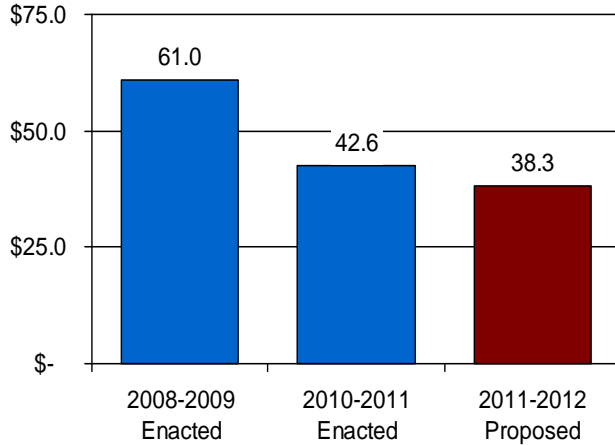
# Regents Reform Agenda



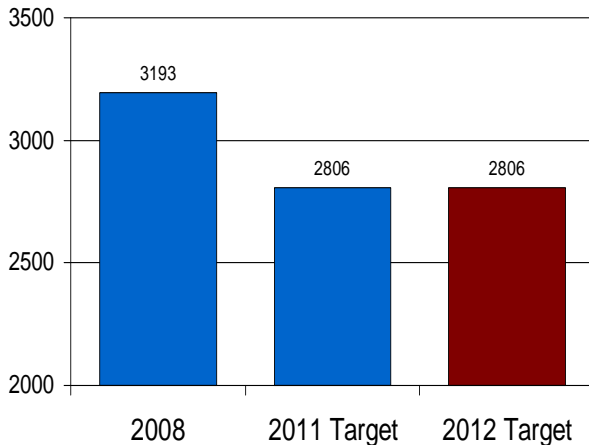
- Adopting Common Core standards; and developing curriculum and assessments aligned to these standards that prepare students for success in college and the workplace
- Building instructional data systems that measure student success and inform teachers and principals how they can improve their practice
- Recruiting, developing, retaining, and rewarding effective teachers and principals
- Turning around the lowest-achieving schools

# Our Challenge: Constrained Capacity and Resources

General Fund Operations  
Appropriations (in millions)



Filled FTEs as of April 1 Each Year



*Since 2008:*

- Department has lost almost 400 staff
- General Fund support down 1/3

---

- Over 90% of staff supported by funding sources that provide little or no discretion in use
- RTTT funds for reform initiatives, not for State or local basic operations

**Additional 10% General Fund cut will be difficult**

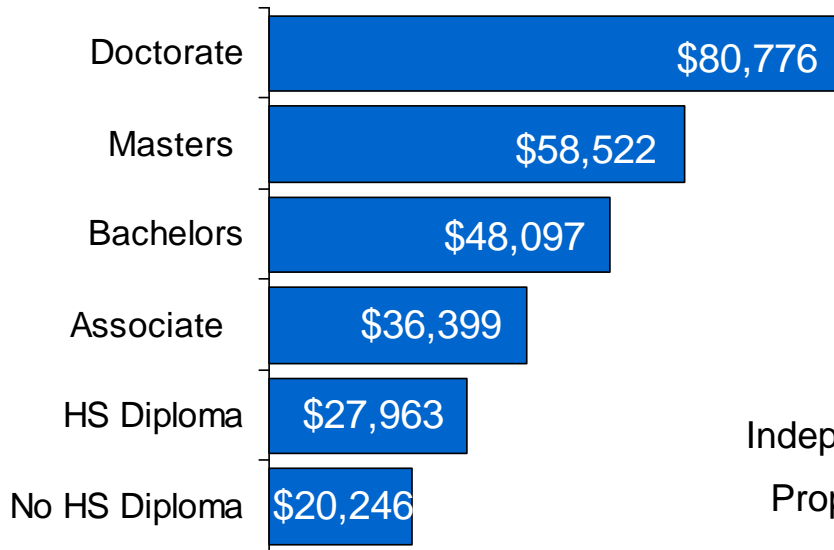
# Regents 2011-12 Budget Request

<b>Regents State Aid Proposal</b>	<b>\$21,956,000</b>
<b>Regents Additional Requests</b>	
Regents Exams	\$15,000,000
Tenured Teacher Hearings	\$7,500,000
Access to GED Testing	\$700,000

The Ultimate Goal and Our Challenge –  
Graduating All Students College and Career Ready

# Higher Education Has Never Mattered More

Median Annual Earnings by Educational Degree: 2008



SOURCE: 2009 ASEC Supplement, Current Population Survey

Colleges	2010 Preliminary Enrollment		2008 Enrollment: Black and Hispanic	
	2-Yr	4-Yr		
SUNY	64	235,665	232,264	18%
CUNY	19	91,340	171,796	50%
Independent	145	5,175	481,028	18%
Proprietary	40	24,009	31,134	57%
Public Special*	1		0(new)	
<b>Total</b>	<b>269</b>	<b>356,189</b>	<b>916,222</b>	<b>27%</b>

\*Wadsworth Center, NYSDOH

## New York's 2009 high school graduates:

- 80% went on to college
- 66% went to college in state



# The Importance of Affordability in Higher Education

- New York 1<sup>st</sup> in grant aid per student; 6th in percent of low-income students in college
- 2010: SUNY 4-yr undergraduate tuition & fees (\$6,414) \$1,191 below national average of \$7,605; CUNY 4-yr undergraduate tuition & fees (\$4,975), \$2,630 below national average.
- Yet, TAP has not kept pace.

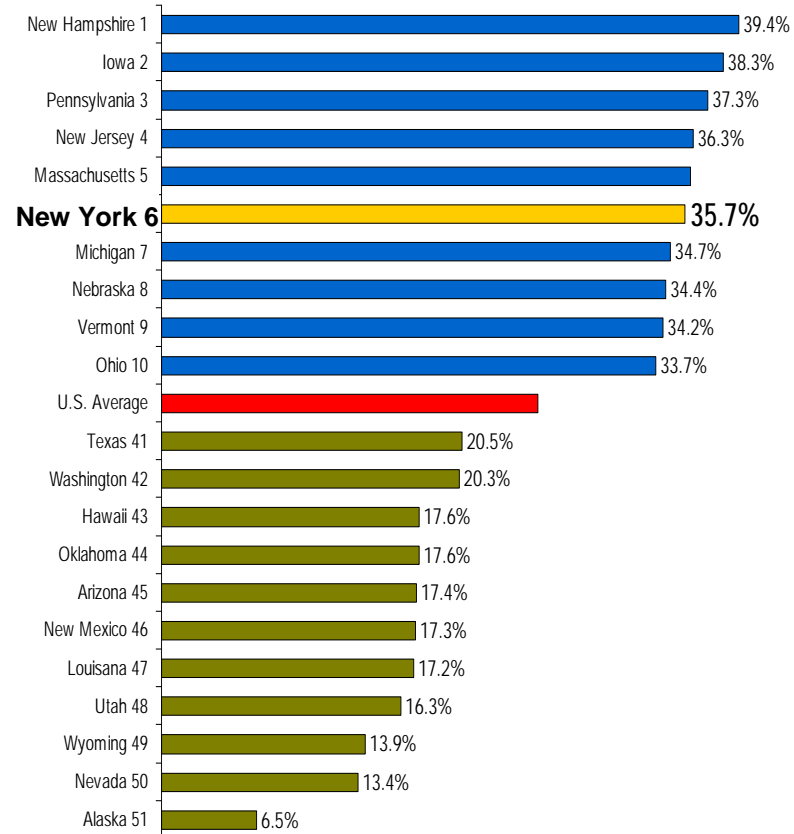
## Average Federal Loan per Full-time First-time Student At 4 Year Institutions: 2008-09

Sector	Each Yr	4-Yr Total	5-Yr Total
CUNY	\$4,201	\$16,805	\$21,006
SUNY	\$5,753	\$23,013	\$28,766
Independent	\$7,430	\$29,722	\$37,152
Proprietary	\$6,532	\$26,130	\$32,662

Private loans add an additional 33% to the loan burden statewide; specific figures not available by sector.

4-year loan totals represent unmet need after TAP, PELL, institutional aid, and family contributions

## College Participation Rates for Dependent Undergraduates from Low Income Families by State: 2008-09



TAP supports affordable higher education.

Support SUNY and CUNY to help make quality higher education affordable to all New Yorkers.

# Ensure Access to Higher Education

## *LEVEL FUNDED*

Liberty Partnerships Program (LPP) - dropout prevention programs

More LPP students graduate high school and attend college than public high school students overall

Science and Technology Entry Program (STEP) - provides academic enrichment

STEP students are more likely to enter college and study science, mathematics and technology

Higher Education Opportunity Program (HEOP) – support to disadvantaged students

HEOP students graduate at a higher rate than their peers

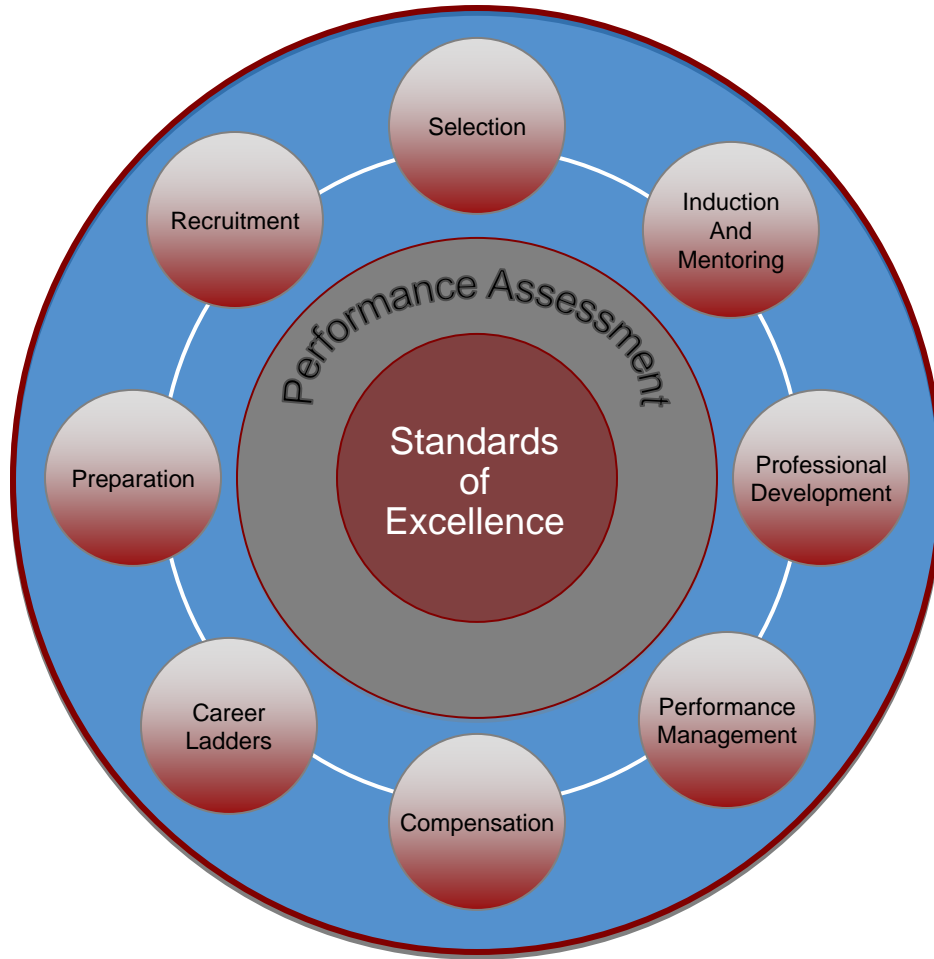
Collegiate Science and Technology Entry Program (CSTEP) - academic enrichment and research experience in STEM

CSTEP seniors graduate at a higher rate than peers; CSTEP graduates pursue graduate programs and licensure at a higher rate than their peers

Teachers of Tomorrow (TOT) – teachers incentives for districts with teacher shortage or subject shortage, and low-performing schools

38 districts funded in 2009-10 for a total of 4,096 teachers recruited to high need schools

# Ensuring Teacher and Principal Excellence



- Expanded clinical experience
- Exams that test clinical skills and, for professional certification, effects on students
- Career ladders
- Professional development based on evaluation system

# Ensure Quality and Excellence in Proprietary Schools (*Business and Trade*)

- Oversee 500 non-degree granting schools and 125 schools currently pending approval
- Protect an estimated 200,000 students each year

## Legislative Proposal will:

### Enhance Oversight Capacity

- Update 25 year-old computer system to provide better monitoring
- Permit enhanced financial reviews and expand use of investigative tools
- Establish candidate schools, allowing them to operate while coming into compliance

### Better Protect Students

- Improve consumer information
- Expedite student assistance when a school closes
- More quickly engage a “teach out” school if a school closes
- Make additional student expenses eligible for reimbursement when a school closes

### Leverage Increased Fees

- Adjust fees to support of the most comprehensive oversight in the nation
- Provide resources to respond to this expanding higher education sector
- Allow work with schools in financial distress, preventing closures and protecting the Tuition Reimbursement Account

# Licensed Professionals Serve and Protect the Public

## Ensure Access to Competent Professional Services

- Licensees must be qualified and competent to provide health, design, and business services - Professional practice affects every citizen in NYS
- The professions are at the core of the state's economy
- Licensing is inextricably linked to NYS education

## Ensure Public Protection Through Professional Oversight And Discipline

- Investigations, prosecutions, and arrests across the State
- Hundreds of thousands of practice interpretations and clarifications
- Implementation of Illegal Practice enforcement:
  - ✓ Currently pursuing over 100 investigations based on allegations of illegal practice under the new civil authority

# Professions: 2010 Results

## Growth in Responsibilities Since 2000

New Professions = 11

Professions with New Continuing Education Requirements = 14

Growth in number of licensees = 150,000+

Operational Responsibility	2010
New licenses issued	43,671
New registrations processed	263,546
Pharmacies, manufacturers, re-packers & wholesalers registered	7,111
Pharmacy inspections conducted	1,204
Disciplinary investigations completed	7,224
Professional education programs reviewed	300
Individual reviews of non-traditional education	15,000
New filings for professional corporations	3,380
Candidates taking OP-developed licensing exams	2,671
Email/telephone inquiries answered	1,000,000

# Critical Capacity to Meet Growing Responsibilities

- License/regulate 800,000 licensees in 48 professions
- Dedicated fees support staffing and IT investments
- Responsibilities continue to grow: more professions and implementation of critical new laws

## Enhanced and Modernized Customer Service

- Expanded communications with licensees and the public:
  - ✓ Respond to 1 million + emails and telephone calls annually
  - ✓ More than 1,000 Frequently Asked Questions and Answers on the Web
- Replacement of 28 year old licensure and discipline computer system— included in statewide E-licensing project
- Use of on-line registration renewals growing - averaging 62%
- Implementing scanning system to replace paper files (1.3 million each year) with electronic files

# Implementation of Critical New Laws

## Availability of Social Work/Mental Health Services

- SED continues to work with Legislature, Executive, and stakeholders to address unforeseen consequences of new mental health licensure laws. New 2010 law addressed:
  - Corporate practice prohibitions that endangered numerous providers and the delivery of needed services
  - Continuation of exemption status for programs throughout the state
- SED amended regulations to simplify and clarify the experience requirements for licensure in Social Work and Mental Health Practice
  - Maintained highest standards in the U.S. to ensure public protection
  - Enabled greater access to services and professional licensure

## CPA Law Updates

The CPA Law was updated in 2009. During 2010, we have:

- Processed 36% more licensure applications than 2009
- Re-registered 41% more licensees than 2009
- Registered almost 650 new public accounting firms
- Added a special unit dedicated to investigating and prosecuting CPA cases, which is currently actively investigating over thirty significant accounting cases