



I. SCHOOL INFORMATION AND COVER PAGE (To be Completed By All Charter Schools)

Created: 07/28/2015

Last updated: 08/01/2015

Please be advised that you will need to complete this task first (including signatures) before all of the other tasks assigned to you by your authorizer are visible on your task page. While completing this task, please ensure that you select the correct authorizer or you may not be assigned the correct tasks.

Page 1

1. SCHOOL NAME AND AUTHORIZER

(Select name from the drop down menu)

NEW HEIGHTS ACADEMY CS (NYC CHANCELLOR) 310600860887

2. CHARTER AUTHORIZER

(For technical reasons, please re-select authorizer name from the drop down menu).

NYCDOE-Authorized Charter School

3. DISTRICT / CSD OF LOCATION

NYC CSD 6

4. SCHOOL INFORMATION

	PRIMARY ADDRESS	PHONE NUMBER	FAX NUMBER	EMAIL ADDRESS
	1818 Amsterdam Avenue New York, New York 10031	212-283-5400	917-507-9314	

4a. PHONE CONTACT NUMBER FOR AFTER HOURS EMERGENCIES

Contact Name	Christina D. Brown
Title	Executive Director
Emergency Phone Number (###-###-####)	

5. SCHOOL WEB ADDRESS (URL)

www.newheightsacademy.org

6. DATE OF INITIAL CHARTER

2005-04-01 00:00:00

7. DATE FIRST OPENED FOR INSTRUCTION

2006-06-01 00:00:00

8. FINAL VERIFIED BEDS ENROLLMENT FOR THE 2014-15 School Year as reported to Department's Office of Information and Reporting Services (via the NYC DOE for charter schools in NYC) in August.

750

9. GRADES SERVED IN SCHOOL YEAR 2014-15

Check all that apply

Grades Served	5, 6, 7, 8, 9, 10, 11, 12
---------------	---------------------------

10. DOES THE SCHOOL CONTRACT WITH A CHARTER OR EDUCATIONAL MANAGEMENT ORGANIZATION?

	Yes/No	Name of CMO/EMO
	No	

Page 2

11. FACILITIES

Will the School maintain or operate multiple sites?

	No, just one site.
--	--------------------

12. SCHOOL SITES

Please list the sites where the school will operate in 2015-16.

	Physical Address	Phone Number	District/CSD	Grades Served at Site	School at Full Capacity at Site	Facilities Agreement
Site 1 (same as primary site)	1818 Amsterdam Avenue New York, New York 10031	212-283-5400	CSD 6	5-12	Yes	Rent/Lease
Site 2						
Site 3						

12a. Please provide the contact information for Site 1 (same as the primary site).

	Name	Work Phone	Alternate Phone	Email Address
--	------	------------	-----------------	---------------

School Leader	Christina D. Brown			
Operational Leader	Tyreek Moore			
Compliance Contact	Christina D. Brown			
Complaint Contact	Tyreek Moore			

13. Are the School sites co-located?

No

Page 3

14. Were there any revisions to the school's charter during the 2014-2015 school year? (Please include both those that required authorizer approval and those that did not require authorizer approval).

No

15. Name and Position of Individual(s) Who Completed the 2014-15 Annual Report.


Christina D. Brown

16. Our signatures below attest that all of the information contained herein is truthful and accurate and that this charter school is in compliance with all aspects of its charter, and with all pertinent Federal, State, and local laws, regulations, and rules. We understand that if any information in any part of this report is found to have been deliberately misrepresented, that will constitute grounds for the revocation of our charter. Check **YES if you agree and use the mouse on your PC or the stylus on your mobile device to sign your name).**

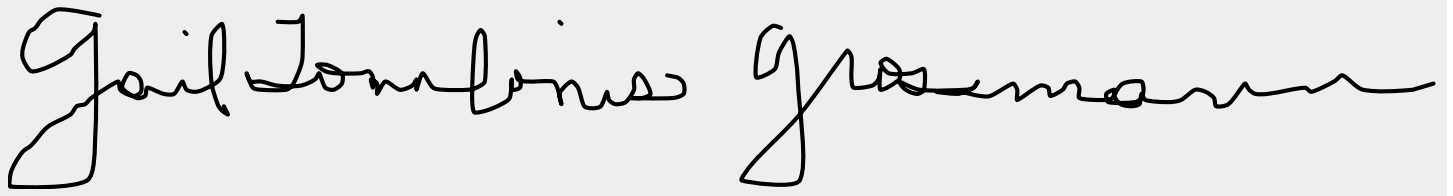
Responses Selected:

Yes

Signature, Head of Charter School



Signature, President of the Board of Trustees

A handwritten signature in black ink on a light gray background. The signature reads "Gail Tomblino Grauman". The first name "Gail" is written in a large, stylized cursive font. The last name "Grauman" is written in a smaller, more fluid cursive font.

Thank you.

 **Appendix A: Link to the New York State School Report Card**

Created: 07/29/2015
Last updated: 08/01/2015

Page 1

Charter School Name:

1. NEW YORK STATE REPORT CARD

Provide a direct URL or web link to the most recent New York State School Report Card for the charter school (See <https://reportcards.nysed.gov>).

(Charter schools completing year one will not yet have a School Report Card or link to one. Please type "URL is not available" in the space provided).

<http://data.nysed.gov/reportcard.php?instid=800000059088&year=2014&createreport=1&enrollment=1&avgclasssize=1&freelunch=1&attendance=1&teacherqual=1&teacherturnover=1&staffcounts=1&hscompleters=1&hsnoncompleters=1&postgradcompleters=1&38>



Appendix A: Progress Toward Goals

Created: 07/29/2015
Last updated: 10/28/2015

Page 1

Charter School Name:

1. NEW YORK STATE REPORT CARD

Provide a direct URL or web link to the most recent New York State School Report Card for the charter school (See <https://reportcards.nysed.gov/>) which captures school-level enrollment and demographic information, staff qualifications, electronic student records, and attendance rates, as prescribed by New York State statute (8 NYCRR 119.3).

(Charter schools completing year one will not yet have a School Report Card or link to one. Please type "URL is not available" in the space provided).

<https://mail.newheightsacademy.org/owa/redir.aspx?C=7c228e9881244e44a7477c6c7c3289f7&URL=http%3a%2f%2fdata.nysed.gov%2freportcard.php%3finstid%3d800000059088%26year%3d2014%26createreport%3d1%26enrollment%3d1%26avgclasssize%3d1%26freelunch%3d1%26>

2. APPENDIX A: PROGRESS TOWARD CHARTER GOALS

The following tables reflect formatting in the online portal required for Board of Regents-authorized charter schools and NYCDOE-authorized charter schools only. Schools should list Progress Toward Charter Goals by August 1, 2015. If the goals are based on student performance data that the school will not have access to before August 1, 2015 (e.g., the NYS Assessment results), explain this in the "2014-2015 Progress Toward Attainment of Goal" column. The information can be updated when available. **Appendix A must be fully completed no later than November 1, 2015.**

2a. ACADEMIC STUDENT PERFORMANCE GOALS

2014-15 Progress Toward Attainment of Academic Goals

Academic Student Performance Goal	Measure Used to Evaluate Progress Toward Attainment of Goal	2014-2015 Progress Toward Attainment of Goal - Met, Partially Met, or Not Met	If Not Met, Describe Efforts School Will Take
Academic Goal 1 Each year, 75 percent of 5th – 8th graders who have been enrolled at the school on BEDS day for at least two consecutive years will perform at or above Level 3 on the New York State ELA examination.	NYS ELA Exams	This ELA goal was not met. Grade -----% at 3 & 4 5 -----0% 6 -----18% 7 -----22% 8 -----16% All -----18%	The goal of the English Department in 2015-2016 is to ensure that teachers are using higher-order questioning to give students focused reading purpose, providing differentiated opportunities for student discussion, and implementing opportunities for students to revisit deeper questions through independent writing. The department will vertically align writing assignments so that New Heights 12th graders will leave the school prepared to write at the college level. Great emphasis has been put on literacy affecting all disciplines and the Gradual Release of Responsibility (GRR). 2015-16 marks year three of GRR roll out. - lesson plan template - PD over the summer - Teachers are being observed - Kagan approach (grouping for cooperative student groups) and Data support - Working to get teachers to let students have more independent practice Summer and current PDs focus on the Circle of Knowledge strategies from The Core Six: Using questioning to foster student participation and critical thinking.
Academic Goal 2 Each year, 75 percent of 5th – 8th graders who have been enrolled at the school on BEDS day for at least two consecutive years will perform at or above Level 3 on the New York State Mathematics examination.	NYS Math Exams	This Math goal was not met. Grade -----% at 3 & 4 5 -----0% 6 -----15% 7 -----26% 8 -----13% All -----18%	Going forward, NHACS will employ the following strategies in math. -Continued focus on gradual release of responsibility -Continued focus on unpacking the CCSS for math -This year they will have two intervention periods for guided reading and guided math to target skills.
Academic Goal 3 Each year, 75 percent of 8th graders who have been enrolled at the school on BEDS day for at least two consecutive years will perform at or above Level 3 on the New York State Science examination.	NYS Grade 8 Science Exam	This Science measure was not met. 55 percent of eighth grade students in at least their second year achieved a standard of at least a 3 on the NYS Science 8 exam.	NHACS science teachers will create and deliver Common-Core aligned science instruction that utilizes technology and lab experiences as a vehicle for increasing student literacy. By improving student literacy skills, students will better interact with the science curriculum, thus increasing performance levels.
Academic Goal 4 Each year, 75 percent of 5th and 8th graders who have been enrolled at the school on BEDS day for at least two consecutive years will perform at or above Level 3 on the New York State Social Studies examination.	NYS discontinued the SS exam.	NYS discontinued the SS exam.	NYS discontinued the SS exam.

Academic Goal 5	Grade level cohorts will reduce by one-half the gap between the percent at or above Level 3 on the previous year's State ELA and Math exams and 75 percent at or above Level 3 on the current year's State ELA and Math exams. For those cohorts in which the number of students scoring above proficiency exceeded 75 percent on the previous year's ELA or Math exams, the cohort will demonstrate growth (above 75 percent) in the current year.	NYS ELA Exams NYS Math Exams	<p>This ELA goal was not met.</p> <p>-----2014-----2015 -2015 -----% at -----% at Grade -----3 & 4-----3 & 4 -5 -----0%-----0% -6 -----12%-----17% -7 -----16%-----21% -8 -----14%-----15%</p> <p>This Math goal was not met.</p> <p>-----2014-----2015 -2015 -----% at -----% at Grade -----3 & 4-----3 & 4 -5 -----0%-----0% -6 -----26%-----15% -7 -----29%-----27% -8 -----12%-----12%</p>	Please refer to the aforementioned ELA and Math strategies going forward.
Academic Goal 6	Each year, the percent of students performing at or above Level 3 on the State ELA exam in each tested grade will place the school in the top quartile of all similar schools (as determined by NYCDOE).	NYC School Quality Report	Reports Unavailable	
Academic Goal 7	Each year, the percent of students performing at or above Level 3 on the State Math exam in each tested grade will place the school in the top quartile of all similar schools (as determined by NYCDOE).	NYC School Quality Report	Reports Unavailable	
Academic Goal 8	By the end of the 4th year of enrollment at the school, 80% of each grade level cohort of students will graduate. (*Note – NHACS does not distinguish between 4th year of enrollment at our school and 4th year of enrollment in high school. We assign all students to the cohort based on the year they entered 9th grade at any school.)	Graduation rates are tallied in August each year to account for students who meet graduation requirements over the summer (both credit attainment and Regents exams).	We met this goal. 90.5 % of the 2011 Cohort graduated by the end of August 2015.	

2a1. Do have more academic goals to add?

Yes

2014-15 Progress Toward Attainment of Academic Goals

	Academic Student Performance Goal	Measure Used to Evaluate Progress Toward Attainment of Goal	Measure Used to Evaluate Progress Toward Attainment of Goal - Met, Partially Met, Not Met	If Not Met, Describe Efforts School Will Take
Academic Goal 9	By the end of the 5th year of enrollment at the school, 95% of each grade level cohort of students will graduate. (*Note – NHACS does not distinguish between 5th year of enrollment at our school and 5th year of enrollment in high school. We assign all students to the cohort based on the year they entered 9th grade at any school.)	Graduation rates are tallied in August each year to account for students who meet graduation requirements over the summer (both credit attainment and Regents exams).	We met this goal. 96.3% of the fifth year cohort graduated by the end of August 2015.	To better meet this goal we have been, and will continue, working closely with families to provide academic and social interventions where needed. We are providing students and families with opportunities for credit recovery in addition to intervention courses designed to address their academic needs. Students and families are consistently kept aware their academic standing and there has been extreme efforts made to track and support completion of diploma requirements. In addition, in an effort to better meet the needs of students and to attain our charter goals of 95%, the school has purchased a curriculum designed to tackle the issues related to college readiness. The school has also committed to getting students on more diverse college campuses in an effort to boost awareness of options available to them.
Academic Goal 10	Each year, the graduating cohort of students will increase by 5% the total number of: • students earning Regents Diplomas with Advanced Designation • AP exams passed with a score of 3 or higher • college credits earned while enrolled in high school	A comparison is conducted of the current graduating class to the previous year's graduating class.	In 2015, forty-four out of fifty-nine students earned a Regents Diploma (75%) and ten students earned an Advanced Designation diploma (17%). We had a total of seven students (12%) earn a 3 or higher on an AP Exam thereby granting college credit for those students. Therefore, we did not meet this goal as a result in a decline in enrollment in 12th grade.	In the upcoming school year, we will encourage more students to aim for Advanced Regents Diplomas using an in-house PBIS. We are also going to implement more in school and after school programming that will support promote growth for advanced learners. Respective teachers that will be teaching advanced placement classes will also be sent to professional development in an effort to help them better their practice.
Academic Goal 11	Each year, the percent of students in the high school accountability cohort passing an English Regents exam with a score of 65 or above by the end of their fourth year will exceed that of the students in the high school accountability cohort from a group of similar schools (as determined by NYCDOE).	Quality School Review Report	Quality School Report is unavailable at this time, however 98% of the 2011 cohort passed the ELA Regents. Indicating we met this goal.	Quality School Report is unavailable at this time, however the data indicates we met this goal.
Academic Goal 12	Each year, the percent of students in the high school accountability cohort passing a Math Regents exam with a score of 65 or above by the end of their fourth year will exceed that of the students in the high school accountability cohort from a group of similar schools (as determined by NYCDOE).	Quality School Review Report	Quality School Report is unavailable at this time, however 100% of the 2011 cohort passed the Math Regents, indicating we met this goal.	Quality School Report is unavailable at this time, however the data indicates we met this goal.
Academic Goal 13	Each year, the school will be deemed "In Good Standing."	Quality School Review Report	Quality School Report is unavailable at this time	Quality School Report is unavailable at this time
Academic Goal 14				
Academic Goal 15				
Academic Goal 16				

2a2. Do have more academic goals to add?

No

Page 2

2b. ORGANIZATIONAL GOALS

2014-15 Progress Toward Attainment of Organizational Goals

	Organizational Goal	Measure Used to Evaluate Progress	2014-15 Progress Toward Attainment	If Not Met, Describe Efforts School Will Take
Org Goal 1	Each year, the school will have an average daily student attendance rate of at least 95%.	We use ATS to track attendance.	Our average daily attendance rate was 95%.	We met this goal.
Org Goal 2	Each year, 80% of all students enrolled during the course of the year will return the following September.	We track discharges on ATS.	We met this goal	We met this goal
Org Goal 3	Each year, the school will comply with all applicable laws, rules, regulations and contract terms including, but not limited to, the New York Charter Schools Act, the New York Freedom of Information Law, the New York Open Meetings Law, the federal Individuals with Disabilities Education Act, and federal Family Educational Rights and Privacy Act.	Our Board of Trustees, Student Support Services Director, Director of Finance Director of Operations, and Executive Director all serve as monitors to ensure we comply with all applicable laws, rules, regulations, and contract terms.	There were no compliance issues flagged for NHACS in 2014-2015 year	We met this goal
Org Goal 4	The board is comprised of at least one individual in each of the "core" functional areas of expertise (finance, legal, education, non-profit and management).	The Board of Trustees annually reviews the board composition and carefully screens new applicants to ensure that we always have good representation in each of the core functional areas of expertise.	There were no issues flagged in this area for the 2014-2015 school year.	We met this goal
Org Goal 5	At least 80% of Board members will have met the attendance goal of attending at least 75% of Board meetings, committee meetings and special events during the academic year. Attendance logs will be kept for each full board meeting and committee meeting.	The board secretary keeps logs of the attendance records for all BOT meetings and committee meetings.	We did not meet this goal. 50% of current members attended at least 75% of Board and committee meetings, with overall attendance of 75%.	We did not meet this goal. This commitment is again included in the annual Board member commitment statement and we are implementing steps to better manage attendance.

2b.1 Do you have more organizational goals to add?

Yes

2014-15 Progress Toward Attainment of Organizational Goals

	Organizational Goal	Measure Used to Evaluate Progress	2014-2015 Progress Toward Attainment	If Not Met, Describe Efforts School Will Take
Org Goal 6	Each year, parents will express satisfaction with the school's program, based on the NYCDOE Learning Environment Survey in which the school will receive scores of 7.5 or higher in each of the four survey domains: Academic Expectations, Communication, Engagement, and Safety and Respect. At least 50% of the parents will participate in the survey.	The NYCDOE Learning Environment Survey	we met this goal	we met this goal
Org Goal 7	Each year, 80% of all staff employed during the course of the year will return the following September.	We count all staff members who were employed as of August 2014 and who by July 2015 have indicated that they will not be returning in September 2015.	We did meet this goal. However, we are retaining approximately 75% of our teaching staff in the upcoming school year as compared to 50% in the previous school year (13/14)	We met this goal, but in an effort to increase teacher specific retention, we've begun to build a new and more effective team of educators at New Heights, we've focused our work on recruiting and retaining highly successful teachers. In the year to come, we will continue providing high quality and targeted professional development, coaching, and feedback cycles that lend to increased teacher success. These practices, along with the recruiting strong teachers, will assist the school in meeting this annual goal. The school has developed a strong recruitment plan, and professional growth plan that will continue to attract and retain the teacher talent needed to increase student achievement at New Heights.
Org Goal 8	Each year, teachers will express satisfaction with school leadership and professional development opportunities as determined by the teacher section of the NYCDOE Learning Environment Survey in which the school will receive scores of 7.5 or higher in each of the four survey domains: Academic Expectations, Communication, Engagement, and Safety and Respect. At least 90% of the staff will participate in the survey.	NYCDOE Learning Environment Survey	We partially met this goal,	We partially met this goal, and we are currently researching more effective methods of increasing staff participation in completing the survey. We are trying to find ways to incentivize staff in completing the survey, through honest conversation regarding the importance of their feedback to our the school leadership team and the impact non participation has on the life of the charter. To improve engagement we created monitoring schedules of observations for the School Directors and coaching cycles for the Department Chairs. We also dedicated more time for collaboration by providing more planning time for teachers.

Org Goal 9	Each year, students will express satisfaction with the school as determined by the student section of the NYCDOE Learning Environment Survey in which the school will receive scores of 7.5 or higher in each of the four survey domains: Academic Expectations, Communication, Engagement, and Safety and Respect. At least 75% of the students will participate in the survey.	NYCDOE Learning Environment Survey	We met this goal	We met this goal
Org Goal 10				
Org Goal 11				
Org Goal 12				
Org Goal 13				
Org Goal 14				
Org Goal 15				

2c. FINANCIAL GOALS

2014-15 Progress Toward Attainment of Financial Goals

	Financial Goals	Measure Used to Evaluate Progress	2014-2015 Progress Toward Attainment	If Not Met, Describe Efforts School Will Take
Financial Goal 1	Each year, student enrollment will be within 15% of full enrollment as defined in the school's contract. This will be maintained on an ongoing basis and monitored bi-monthly.	The charter states an enrollment goal of 750 students.	Our FTE enrollment in June 2015 was 722.85 students, a less than 4% difference from the charter projection.	We met this goal
Financial Goal 2	Upon the completion of each fiscal year, the school will undergo an independent financial audit that will result in an unqualified opinion and no major findings.	Each year the school undergoes an independent financial audit.	While the audit for the 2014-15 school year is not complete, there have been no indications of any findings. NHACS has had clean audits since 2009.	We met this goal
Financial Goal 3	Each year, the school will operate on a balanced budget and maintain a stable cash flow.	The finance committee of the Board of Trustees works closely with the Director of Finance and Executive Director to ensure a balanced budget and stable cash flow.	The budget for the 2015-16 school year was passed at the April 2015 board meeting.	We met this goal with stable cash flow
Financial Goal 4				
Financial Goal 5				



Appendix B: Total Expenditures and Administrative Expenditures per Child

Created: 07/29/2015

Last updated: 07/31/2015

Page 1

Charter School Name:

B. Financial Information

This information is required of ALL charter schools. Provide the following measures of fiscal performance of the charter school in Appendix B (Total Expenditures and Administrative Expenditures Per Child):

1. Total Expenditures Per Child

To calculate '**Total Expenditures per Child**' take total expenditures (from the unaudited 2014-15 Schedule of Functional Expenses) and divide by the year end per pupil count. (Integers Only. No dollar signs or commas).

Line 1: Total Expenditures	12333693
Line 2: Year End Per Pupil Count	715
Line 3: Divide Line 1 by Line 2	17250

2. Administrative Expenditures per Child

To calculate '**Administrative Expenditures per Child**' take the relevant portion from the 'personnel services cost' row and the 'management and general' column (from the unaudited 2014-15 Schedule of Functional Expenses) and divide by the year end per pupil count. The relevant portion that must be included in this calculation is defined as follows:

Administrative Expenditures: Administration and management of the charter school includes the activities and personnel of the offices of the chief school officers, the treasurer, the finance or business offices, the purchasing unit, the employee personnel offices, the records management offices, or a public information and services offices. It also includes those administrative and management services provided by other organizations or corporations on behalf of the charter school for which the charter school pays a fee or other compensation.

Please note the following:

- Do not include the FTE of personnel dedicated to administration of the instructional programs.
- Do not include Employee Benefit costs or expenditures in the above calculations.
- A template for the Schedule of Functional Expenses is provided on page 20 of the 2014-15 Annual Report Guidelines to assist schools identify the categories of expenses needed to compute the two per pupil calculations. This template does not need to be completed or submitted on August 1st as it will be submitted November 1st as part of the audited financial statements. Therefore schools should use unaudited amounts for these per pupil calculations. (See the 2014-15 Annual Report Guidelines in "Resources" area of your portal task page).

To calculate 'Administrative Expenditures per Child**' take the relevant portion from the 'personnel services cost' row and the 'management and general' column (from the 2014-15 Schedule of Functional Expenses) and divide by the year end per pupil count. (Integers Only. No dollar signs or commas).**

Line 1: Relevant Personnel Services Cost (Row)	789453
Line 2: Management and General Cost (Column)	823964
Line 3: Sum of Line 1 and Line 2	1613417
Line 4: Year End Per Pupil Count	715
Line 5: Divide Line 3 by the Year End Per Pupil Count	1152

Thank you.

NEW HEIGHTS ACADEMY CHARTER SCHOOL

MANAGEMENT LETTER

JUNE 30, 2015

FRUCHTER ROSEN & COMPANY, P.C.
CERTIFIED PUBLIC ACCOUNTANTS
156 WEST 56TH STREET
NEW YORK, NEW YORK 10019

TEL: (212) 957-3600
FAX: (212) 957-3696

September 17, 2015

To the Board of Trustees of
New Heights Academy Charter School
1818 Amsterdam Avenue
New York, NY 10031

In planning and performing our audit of the financial statements of New Heights Academy Charter School (the "School") as of and for the year ended June 30, 2015, in accordance with auditing standards generally accepted in the United States of America, we considered the School's internal control over financial reporting (internal control) as a basis for designing audit procedures that are appropriate in the circumstances for the purpose of expressing our opinion on the financial statements, but not for the purpose of expressing an opinion on the effectiveness of the School's internal control. Accordingly, we do not express an opinion on the effectiveness of the School's internal control.

A deficiency in internal control exists when the design or operation of a control does not allow management or employees, in the normal course of performing their assigned functions, to prevent, or detect and correct, misstatements on a timely basis. A material weakness is a deficiency, or a combination of deficiencies, in internal control, such that there is a reasonable possibility that a material misstatement of the School's financial statements will not be prevented, or detected and corrected, on a timely basis.

Our consideration of internal control was for the limited purpose described in the first paragraph and was not designed to identify all deficiencies in internal control that might be material weaknesses. Given these limitations, during our audit we did not identify any deficiencies in internal control that we consider to be material weaknesses. However, material weaknesses may exist that have not been identified.

The observation we identified is described in the attached Exhibit I. We have determined that the observation does not constitute a significant deficiency or a material weakness. Management's response to the observation have not been subjected to the auditing procedures applied in the audit of the financial statements and accordingly, we express no opinion on it.

This communication is intended solely for the information and use of management, Board of Trustees, federal, state and local awarding agencies, The Department of Education of the City of New York, The State Education Department of the State University of New York, and others within the School, and is not intended to be, and should not be, used by anyone other than these specified parties.

We appreciate your cooperation and the assistance we received during the course of our audit.


FRUCHTER ROSEN & COMPANY, P.C.
Certified Public Accountants

New York, New York
September 17, 2015

NEW HEIGHTS ACADEMY CHARTER SCHOOL
MANAGEMENT LETTER
JUNE 30, 2015

CONTENTS

EXHIBIT I – CURRENT YEAR OBSERVATION

A. Capital Assets

1

NEW HEIGHTS ACADEMY CHARTER SCHOOL
MANAGEMENT LETTER
JUNE 30, 2015

EXHIBIT I – CURRENT YEAR OBSERVATION

A. CAPITAL ASSETS

Observation

We noted that the School's inventory listing of property and equipment did not agree to the fixed assets ledger provided for the audit.

Recommendation

As indicated in the School's policies and procedures, fixed assets acquisitions should be identified, tagged and entered into a detailed fixed asset ledger. Tags should be placed in a visible area and there should be a clear trail of tracing the capital asset to the fixed asset ledger maintained by the School. On an annual basis, the School should take a physical inventory of all capital assets to ensure the completeness and accuracy of the School's records.

Management's Response

Management is in agreement and is working with its Information Technology team to implement the suggestion accordingly.

NEW HEIGHTS ACADEMY CHARTER SCHOOL
(A Not-For-Profit Corporation)

FINANCIAL STATEMENTS

JUNE 30, 2015 AND 2014

NEW HEIGHTS ACADEMY CHARTER SCHOOL
(A Not-For-Profit Corporation)
FINANCIAL STATEMENTS
JUNE 30, 2015 AND 2014

C O N T E N T S

	<u>PAGE</u>
INDEPENDENT AUDITORS' REPORT	1 - 2
FINANCIAL STATEMENTS AND SUPPLEMENTARY INFORMATION:	
Statements of financial position	3
Statements of activities	4
Statements of cash flows	5
Notes to the financial statements	6 - 14
Independent auditors' report on supplementary information	15
Schedule of functional expenses	16
SINGLE AUDIT SECTION:	
INDEPENDENT AUDITORS' REPORT ON INTERNAL CONTROL OVER FINANCIAL REPORTING AND ON COMPLIANCE AND OTHER MATTERS BASED ON AN AUDIT OF FINANCIAL STATEMENTS PERFORMED IN ACCORDANCE WITH <i>GOVERNMENT AUDITING STANDARDS</i>	17 - 18
INDEPENDENT AUDITORS' REPORT ON COMPLIANCE FOR EACH MAJOR PROGRAM AND ON INTERNAL CONTROL OVER COMPLIANCE REQUIRED BY OMB CIRCULAR A-133	19 - 20
SCHEDULE OF FINDINGS AND QUESTIONED COSTS	21
SCHEDULE OF EXPENDITURES OF FEDERAL AWARDS	22
NOTES TO SCHEDULE OF EXPENDITURES OF FEDERAL AWARDS	23

FRUCHTER ROSEN & COMPANY, P.C.

CERTIFIED PUBLIC ACCOUNTANTS

156 WEST 56TH STREET

NEW YORK, NEW YORK 10019

TEL: (212) 957-3600

FAX: (212) 957-3696

INDEPENDENT AUDITORS' REPORT

TO THE BOARD OF TRUSTEES OF
NEW HEIGHTS ACADEMY CHARTER SCHOOL

Report on the Financial Statements

We have audited the accompanying financial statements of New Heights Academy Charter School (the "School") (a not-for-profit corporation), which comprise the statement of financial position as of June 30, 2015, and the related statements of activities, functional expenses, and cash flows for the year then ended, and the related notes to the financial statements.

Management's Responsibility for the Financial Statements

Management is responsible for the preparation and fair presentation of these financial statements in accordance with accounting principles generally accepted in the United States of America; this includes the design, implementation, and maintenance of internal control relevant to the preparation and fair presentation of financial statements that are free from material misstatement, whether due to fraud or error.

Auditors' Responsibility

Our responsibility is to express an opinion on these financial statements based on our audit. We conducted our audit in accordance with auditing standards generally accepted in the United States of America and the standards applicable to financial audits contained in *Government Auditing Standards*, issued by the Comptroller General of the United States. Those standards require that we plan and perform the audit to obtain reasonable assurance about whether the financial statements are free from material misstatement.

An audit involves performing procedures to obtain audit evidence about the amounts and disclosures in the financial statements. The procedures selected depend on the auditors' judgment, including the assessment of the risks of material misstatement of the financial statements, whether due to fraud or error. In making those risk assessments, the auditor considers internal control relevant to the School's preparation and fair presentation of the financial statements in order to design audit procedures that are appropriate in the circumstances, but not for the purpose of expressing an opinion on the effectiveness of the School's internal control. Accordingly, we express no such opinion. An audit also includes evaluating the appropriateness of accounting policies used and the reasonableness of significant accounting estimates made by management, as well as evaluating the overall presentation of the financial statements.

We believe that the audit evidence we have obtained is sufficient and appropriate to provide a basis for our audit opinion.

Opinion

In our opinion, the financial statements referred to above present fairly, in all material respects, the financial position of the School as of June 30, 2015, and the changes in its net assets and its cash flows for the year then ended in accordance with accounting principles generally accepted in the United States of America.

Other Matters

Report on Summarized Comparative Information

We have previously audited the School's 2014 financial statements, and our report dated September 4, 2014, expressed an unmodified opinion on those audited financial statements. In our opinion, the summarized comparative information presented herein as of and for the year ended June 30, 2014, is consistent, in all material respects, with the audited financial statements from which it has been derived.

Other Information

Our audit was conducted for the purpose of forming an opinion on the financial statements as a whole. The accompanying schedule of expenditures of federal awards, as required by Office of Management and Budget Circular A-133, *Audits of States, Local Governments, and Non-Profit Organizations*, is presented for purposes of additional analysis and is not a required part of the financial statements. Such information is the responsibility of management and was derived from and relates directly to the underlying accounting and other records used to prepare the financial statements. The information has been subjected to the auditing procedures applied in the audit of the financial statements and certain additional procedures, including comparing and reconciling such information directly to the underlying accounting and other records used to prepare the financial statements or to the financial statements themselves, and other additional procedures in accordance with auditing standards generally accepted in the United States of America. In our opinion, the information is fairly stated, in all material respects, in relation to the financial statements as a whole.

Other Reporting Required by Government Auditing Standards

In accordance with *Government Auditing Standards*, we have also issued our report dated September 17, 2015, on our consideration of the School's internal control over financial reporting and on our tests of its compliance with certain provisions of laws, regulations, contracts, and grant agreements and other matters. The purpose of that report is to describe the scope of our testing of internal control over financial reporting and compliance and the results of that testing, and not to provide an opinion on internal control over financial reporting or on compliance. That report is an integral part of an audit performed in accordance with *Government Auditing Standards* in considering the School's internal control over financial reporting and compliance.


FRUCHTER ROSEN & COMPANY, P.C.
Certified Public Accountants

New York, New York
September 17, 2015

NEW HEIGHTS ACADEMY CHARTER SCHOOL
(A Not-For-Profit Corporation)
STATEMENTS OF FINANCIAL POSITION
JUNE 30,

	2015	2014
ASSETS		
Current assets:		
Cash and cash equivalents	\$ 2,548,645	\$ 2,587,352
Investments	1,508,910	1,502,692
Grants and contracts receivable	224,192	407,385
Prepaid expenses and other receivables	436,343	359,423
Total current assets	4,718,090	4,856,852
Property and equipment, net of accumulated depreciation and amortization of \$2,200,531 and \$1,822,823, respectively	2,746,239	2,973,401
Other assets:		
Security deposits	695,732	595,232
Restricted cash	75,480	75,405
Total other assets	771,212	670,637
TOTAL ASSETS	\$ 8,235,541	\$ 8,500,890
LIABILITIES AND NET ASSETS		
Current liabilities:		
Accounts payable and accrued expenses	\$ 251,320	\$ 286,408
Accrued payroll and payroll taxes	672,515	630,408
Refundable advances	12,303	37,808
Total current liabilities	936,138	954,624
Deferred rent	155,128	59,165
Total liabilities	1,091,266	1,013,789
Net assets:		
Unrestricted:		
Undesignated	5,635,365	5,983,159
Board-designated	1,508,910	1,502,692
Total unrestricted	7,144,275	7,485,851
Temporarily restricted	-	1,250
Total net assets	7,144,275	7,487,101
TOTAL LIABILITIES AND NET ASSETS	\$ 8,235,541	\$ 8,500,890

The accompanying notes are an integral part of the financial statements.

NEW HEIGHTS ACADEMY CHARTER SCHOOL
(A Not-For-Profit Corporation)
STATEMENTS OF ACTIVITIES
FOR THE YEARS ENDED JUNE 30,

	2015		2014	
	Unrestricted	Temporarily Restricted	Total All Funds	Total All Funds
Revenue and support:				
State and local per pupil operating revenue	\$ 11,143,016	\$ -	\$ 11,143,016	\$ 11,073,364
Federal grants	528,103	-	528,103	564,662
Federal grants - E-Rate and IDEA	128,204	-	128,204	137,262
State and city grants	62,408	-	62,408	112,280
Contributions and grants	39,355	2,500	41,855	81,095
In-kind donations	810	-	810	13,105
Investment income, net	16,055	-	16,055	16,865
Net assets released from restriction - satisfaction of purpose restriction	3,750	(3,750)	-	-
Total revenue and support	11,921,701	(1,250)	11,920,451	11,998,633
Expenses:				
Program services				
Regular education	8,564,928	-	8,564,928	8,246,912
Special education	2,145,598	-	2,145,598	1,982,942
Other programs	98,404	-	98,404	95,340
Total program services	10,808,930	-	10,808,930	10,325,194
Supporting services				
Management and general	1,401,890	-	1,401,890	1,770,665
Fundraising	52,457	-	52,457	153,870
Total expenses	12,263,277	-	12,263,277	12,249,729
Changes in net assets	(341,576)	(1,250)	(342,826)	(251,096)
Net assets - beginning of year	7,485,851	1,250	7,487,101	7,738,197
Net assets - end of year	<u>\$ 7,144,275</u>	<u>\$ -</u>	<u>\$ 7,144,275</u>	<u>\$ 7,487,101</u>

The accompanying notes are an integral part of the financial statements.

NEW HEIGHTS ACADEMY CHARTER SCHOOL
(A Not-For-Profit Corporation)
STATEMENTS OF CASH FLOWS
FOR THE YEARS ENDED JUNE 30,

	2015	2014
CASH FLOWS FROM OPERATING ACTIVITIES		
Changes in net assets	\$ (342,826)	\$ (251,096)
Adjustments to reconcile changes in net assets to net cash provided by operating activities:		
Depreciation and amortization	377,708	401,604
Loss on disposition of property and equipment	-	3,776
Unrealized (losses) gains on investments	4,954	(1,493)
Changes in certain assets and liabilities:		
(Increase) in grants and contracts receivable	183,193	25,775
(Increase) Decrease in prepaid expenses and other receivables	(76,920)	20,639
(Increase) in security deposits	(100,500)	(101,000)
Decrease in deferred rent asset	-	75,641
(Decrease) Increase in accounts payable and accrued expenses	(35,088)	100,325
Increase (Decrease) in accrued payroll and payroll taxes	42,107	(254,921)
(Decrease) Increase in refundable advances	(25,505)	26
Increase in deferred rent	95,963	59,165
NET CASH PROVIDED BY OPERATING ACTIVITIES	123,086	78,441
CASH FLOWS FROM INVESTING ACTIVITIES		
Purchases of property and equipment	(150,546)	(281,276)
Purchases of investments	(11,764)	(3,001,199)
Sale of investments	592	1,500,000
(Increase) in restricted cash	(75)	(76)
NET CASH (USED IN) INVESTING ACTIVITIES	(161,793)	(1,782,551)
NET (DECREASE) IN CASH AND CASH EQUIVALENTS	(38,707)	(1,704,110)
CASH AND CASH EQUIVALENTS - BEGINNING OF YEAR	2,587,352	4,291,462
CASH AND CASH EQUIVALENTS - END OF YEAR	\$ 2,548,645	\$ 2,587,352
SUPPLEMENTAL DISCLOSURES OF CASH FLOW INFORMATION:		
Cash paid during the year for interest	\$ -	\$ -

The accompanying notes are an integral part of the financial statements.

NEW HEIGHTS ACADEMY CHARTER SCHOOL
(A Not-For-Profit Corporation)
NOTES TO FINANCIAL STATEMENTS
JUNE 30, 2015 AND 2014

NOTE 1 - PRINCIPAL BUSINESS ACTIVITY AND SUMMARY OF SIGNIFICANT ACCOUNTING POLICIES

Nature of Organization

New Heights Academy Charter School (the "School") is a New York State, not-for-profit educational corporation that was incorporated on April 15, 2005 to operate a charter school pursuant to Article 56 of the Education Law of the State of New York. The School was granted a provisional charter on April 15, 2005 valid for a term of five years and renewable upon expiration by the Board of Regents of the University of the State of New York. The School renewed its charter through 2017. The School provides a college preparatory education for students in Washington Heights and Inwood neighborhoods of upper Manhattan. The School's academically rigorous curriculum will ensure that all students set and meet post secondary education and career goals. Simultaneously, the School's nurturing environment of small class sizes and a focus on character education will ensure that our students develop a strong self-identity conducive to leading responsible lives as citizens in our global society. The School provided education to approximately 723 students in grades five through twelve during the 2014-2015 academic year.

Food and Transportation

During the years ended June 30, 2015 and 2014, the School retained an outside vendor to provide meals for students in which the School receives reimbursement from the New York State Education Department. The Office of Pupil Transportation provides free transportation to the majority of the students.

Tax Status

The School is exempt from Federal income tax under Section 501(a) of the Internal Revenue Code as a School described in Section 501(c)(3) and a similar provision under New York State income tax laws. The School has also been classified as an entity that is not a private foundation within the meaning of Section 509(a) and qualifies for deductible contributions as provided in section 170(b)(1)(A)(ii). The School is subject to income taxes only on net unrelated business income. The School did not have net unrelated business income for the years ended June 30, 2015 and 2014.

The School's accounting policy provides that a tax expense or benefit from an uncertain tax position may be recognized when it is more likely than not that the position will be sustained upon examination, including resolutions of any related appeals or litigation processes, based on the technical merits. The School has no uncertain tax position resulting in an accrual of tax expense or benefit.

IRS Forms 990 filed by the School are subject to examination by the Internal Revenue Service up to three years from the extended due date of each return. Forms 990 filed by the School are no longer subject to examination for the fiscal years ended June 30, 2011, and prior.

NEW HEIGHTS ACADEMY CHARTER SCHOOL
(A Not-For-Profit Corporation)
NOTES TO FINANCIAL STATEMENTS
JUNE 30, 2015 AND 2014

NOTE 1 - PRINCIPAL BUSINESS ACTIVITY AND SUMMARY OF SIGNIFICANT ACCOUNTING POLICIES (Continued)

Basis of Presentation

The financial statement presentation follows the requirements of the Financial Accounting Standards Board in its Accounting Standards Codification (“ASC”) No. 958-205 which provides guidance for the classification of net assets. The amounts for each of the three classes of net assets are based on the existence or absence of donor-imposed restrictions described as follows:

Unrestricted

Net assets of the School whose use has not been restricted by an outside donor or by law. They are available for any use in carrying out the operations of the School.

Board-designated net assets were established by the Board of Trustees to provide a reserve for unforeseen operating and capital expenses.

Temporarily Restricted

Net assets of the School whose use has been limited by donor-imposed stipulations that either expire with the passage of time or can be fulfilled and removed by actions of the School. When such stipulations end or are fulfilled, such temporarily restricted net assets are reclassified to unrestricted net assets and reported in the statement of activities and changes in net assets, as net assets released from restrictions.

Permanently Restricted

Net assets of the School whose use has been permanently limited by donor-imposed restrictions. Such assets include contributions required to be invested in perpetuity, the income from which is available to support charitable purposes designated by the donors.

The School had no permanently restricted net assets at June 30, 2015 and 2014.

Revenue and Support

Contributions are recognized when the donor makes a promise to give to the School that is, in substance, unconditional. Grants and other contributions of cash are reported as temporarily restricted support if they are received with donor stipulations. Restricted contributions and grants that are made to support the School’s current year activities are recorded as unrestricted revenue. Contributions of assets other than cash are recorded at their estimated fair value.

Revenue from the state and local governments resulting from the School’s charter status and based on the number of students enrolled is recorded when services are performed in accordance with the charter agreement. Federal and other state and local funds are recorded when expenditures are incurred and billable to the government agency.

NEW HEIGHTS ACADEMY CHARTER SCHOOL
(A Not-For-Profit Corporation)
NOTES TO FINANCIAL STATEMENTS
JUNE 30, 2015 AND 2014

NOTE 1 - PRINCIPAL BUSINESS ACTIVITY AND SUMMARY OF SIGNIFICANT ACCOUNTING POLICIES (Continued)

Use of Estimates

The preparation of financial statements in conformity with accounting principles generally accepted in the United States of America requires management to make estimates and assumptions that affect the reported amounts of assets and liabilities and disclosure of contingent assets and liabilities at the date of the financial statements and the reported amounts of revenue and expenses during the reporting period. Accordingly, actual results could differ from those estimates.

Cash and Cash Equivalents

For the purpose of the statements of cash flows, the School considers all highly liquid debt instruments purchased with a maturity of three months or less to be cash equivalents.

Concentration of Credit Risk

Financial instruments which potentially subject the School to concentrations of credit risk are cash and cash equivalents. The School places its cash and cash equivalents on deposit in what it believes to be highly credited financial institutions. Cash balances may exceed the FDIC insured levels of \$250,000 per institution at various times during the year. The School believes that there is little risk in any losses and has not experienced any losses in such accounts.

Restricted Cash

Under the provisions of its charter, the School established an escrow account to pay for legal or audit expenses that would be associated with a dissolution should it occur.

Property and Equipment

Purchased property and equipment are recorded at cost. Maintenance and repairs are expensed as incurred. Property and equipment acquired with certain government funding are recorded as expenses pursuant to the terms of the contract, in which ownership of such property and equipment is retained by the funding source. No amortization is recorded on construction-in-progress until property is placed into service. Depreciation and amortization is provided on the straight line method over the estimated useful lives as follows:

Computers and equipment	3 to 5 years
Website development	3 years
Software	5 years
Furniture and fixtures	7 years
Leasehold improvements	Useful life or related lease

Refundable Advances

The School records certain government grants and contracts as refundable advances until related services are performed, at which time it is recognized as revenue.

NEW HEIGHTS ACADEMY CHARTER SCHOOL
(A Not-For-Profit Corporation)
NOTES TO FINANCIAL STATEMENTS
JUNE 30, 2015 AND 2014

NOTE 1 - PRINCIPAL BUSINESS ACTIVITY AND SUMMARY OF SIGNIFICANT ACCOUNTING POLICIES (Continued)

Comparative Financial Information

The accompanying statements of activities and schedule of functional expenses are presented with summarized comparative information. Such prior year information is not presented by net asset class in the statements of activities or by functional category in the schedule of functional expenses. Accordingly, such information should be read in conjunction with the School's 2014 financial statements from which the summarized information was derived.

NOTE 2 - GRANTS AND CONTRACTS RECEIVABLE

Grants and contracts receivable consist of federal, state, and city entitlements and grants. The School expects to collect these receivables within one year.

NOTE 3 - INVESTMENTS

Investments held by the School consist of the following at June 30,:

	2015	
	Cost Basis	Market Value
Fixed income – Ultra short duration bond	\$ 1,513,864	\$ 1,508,910
	2014	
	Cost Basis	Market Value
Cash equivalents	\$ 592	\$ 592
Fixed income – Ultra short duration bond	1,500,607	1,502,100
	\$ 1,501,199	\$ 1,502,692

These investments are presented in the statements of financial position at fair value. Unrealized gains and (losses) are included with investment income in the statements of activities.

Investment income consist of the following for the years ended June 30,:

	2015	2014
Interest and dividends	\$ 21,009	\$ 15,372
Unrealized (losses) gains on investments	(4,954)	1,493
	\$ 16,055	\$ 16,865

NEW HEIGHTS ACADEMY CHARTER SCHOOL
(A Not-For-Profit Corporation)
NOTES TO FINANCIAL STATEMENTS
JUNE 30, 2015 AND 2014

NOTE 4 - FAIR VALUE MEASUREMENTS

ASC No. 820-10, *Fair Value Measurements*, establishes a framework for measuring fair value. That framework provides a fair value hierarchy that prioritizes the inputs to valuation techniques used to measure fair value. The hierarchy gives the highest priority to unadjusted quoted prices in active markets for identical assets or liabilities (level 1 measurements) and the lowest priority to unobservable inputs (level 3 measurements). The three levels of the fair value hierarchy under ASC No. 820-10 are described as follows:

- Level 1 – Inputs to the valuation methodology are unadjusted quoted prices for identical assets or liabilities in active markets that the School has the ability to access.
- Level 2 – Inputs other than quoted prices included in level 1 that are observable for the asset or liability, either directly or indirectly including inputs in markets that are not considered to be active.
- Level 3 – Inputs to the valuation methodology are unobservable and significant to the fair value measurement.

The asset's or liability's fair value measurement level within the fair value hierarchy is based on the lowest level of any input that is significant to the fair value measurement. Valuation techniques used need to maximize the use of observable inputs and minimize the use of unobservable inputs.

Following is a description of the valuation methodologies used for assets measured at fair value:

Cash equivalents: Valued at quoted market prices.

Fixed income: Valued at the closing price reported on the securities market on which the investment is traded.

The preceding methods may produce a fair value calculation that may not be indicative of net realizable value or reflective of future fair values. Furthermore, although the School believes its valuation methods are appropriate and consistent with other market participants, the use of different methodologies or assumptions to determine the fair value of certain financial instruments could result in a different fair value measurement at the reporting date.

The primary uses of fair value measures in the School's financial statements are:

- initial measurement of noncash gifts, including gifts of investment assets.
- recurring measurement of investments.

NEW HEIGHTS ACADEMY CHARTER SCHOOL
(A Not-For-Profit Corporation)
NOTES TO FINANCIAL STATEMENTS
JUNE 30, 2015 AND 2014

NOTE 4 - FAIR VALUE MEASUREMENTS (Continued)

The following table sets forth by level, within the fair value hierarchy, the School's assets at fair value at June 30,:

	2015			
	Level 1	Level 2	Level 3	Total
Fixed income –				
Ultra short duration bond	<u>\$ 1,508,910</u>	<u>\$ -</u>	<u>\$ -</u>	<u>\$ 1,508,910</u>
	2014			
	Level 1	Level 2	Level 3	Total
Cash equivalents	\$ 592	\$ -	\$ -	\$ 592
Fixed income –				
Ultra short duration bond	<u>1,502,100</u>	<u>-</u>	<u>-</u>	<u>1,502,100</u>
	<u>\$ 1,502,692</u>	<u>\$ -</u>	<u>\$ -</u>	<u>\$ 1,502,692</u>

NOTE 5 - PROPERTY AND EQUIPMENT

Property and equipment consist of the following at June 30,:

	2015	2014
Computers and equipment	\$ 1,478,033	\$ 1,365,922
Website development	17,000	17,000
Software	184,517	184,517
Furniture and fixtures	367,466	358,041
Leasehold improvements	<u>2,899,754</u>	<u>2,870,744</u>
	4,946,770	4,796,224
Less: Accumulated depreciation and amortization	<u>2,200,531</u>	<u>1,822,823</u>
	<u>\$ 2,746,239</u>	<u>\$ 2,973,401</u>

Depreciation and amortization expense was \$377,708 and \$401,604 for the years ended June 30, 2015 and 2014, respectively.

NOTE 6 - REVENUE CONCENTRATION

The School receives a substantial portion of its support and revenue from the New York City Department of Education. If the charter school laws were modified, reducing or eliminating these revenues, the School's finances could be materially adversely affected.

NEW HEIGHTS ACADEMY CHARTER SCHOOL
(A Not-For-Profit Corporation)
NOTES TO FINANCIAL STATEMENTS
JUNE 30, 2015 AND 2014

NOTE 7 - FUNCTIONAL ALLOCATION OF EXPENSE

Directly identifiable expenses are charged to programs and supporting services. Expenses related to more than one function are charged to programs and supporting services on the basis of periodic time and expense studies. Fundraising, management and general expense includes those expenses that are not directly identifiable with any other specific function, but provide for the overall support and direction of the School.

NOTE 8 - IN-KIND DONATIONS

Donated Services

Donated services are recognized as contributions in accordance with ASC No. 605, "Accounts for Contributions Received and Contributions Made," if the services (a) create or enhance non-financial assets or (b) require specialized skills, are performed by people with those skills, and would otherwise be purchased by the School.

Two entities have provided legal services to the School at no charge. The value of these services meets the criteria for recognition in the financial statements and is recorded at fair value. For the years ended June 30, 2015 and 2014, the value of such donated services amounted to \$-0- and \$12,849, respectively.

Donated Goods

For the years ended June 30, 2015 and 2014, the School received shirts and donated library books from a donor with a fair value of \$810 and \$256, respectively. The entire value is included in student/staff events and textbooks in the accompanying schedule of functional expenses.

NOTE 9 - RETIREMENT PLAN

The School maintains a pension plan qualified under Internal Revenue Code 401(k), for the benefit of its eligible employees. Under the plan, the School will match employee contributions up to 5% of annual compensation. Employee match for the years ended June 30, 2015 and 2014 amounted to \$162,863 and \$253,812, respectively.

NOTE 10 - COMMITMENTS

Operating lease – Civic Builders

During the year ended June 30, 2010, the School finalized a non-cancellable sublease agreement with Civic Builders ("Civic") on the expansion of their facility expiring on May 30, 2039. As a result of this agreement, Civic took over the School's prior lease obligation and secured options for an additional two floors. The agreement enabled the School to expand its infrastructure to service approximately 750 students. In addition, the agreement requires the School to fund Civic a reserve amount of \$500,000, payable at \$100,000 per year starting in September 2010 and included in security deposits in the accompanying statements of financial position.

NEW HEIGHTS ACADEMY CHARTER SCHOOL
(A Not-For-Profit Corporation)
NOTES TO FINANCIAL STATEMENTS
JUNE 30, 2015 AND 2014

NOTE 10 - COMMITMENTS (Continued)

Future minimum lease payments are as follows:

Year ending June 30,	2016	\$ 1,653,916
	2017	5,801,031
	2018	1,396,931
	2019	1,438,839
	2020	1,482,004
	Thereafter	<u>38,117,492</u>
		<u>\$ 49,890,213</u>

Operating lease - 1818-1838 Amsterdam Avenue LLC

On April 1, 2012, the School entered into a non-cancellable lease agreement with 1818-1838 Amsterdam Avenue LLC (“Amsterdam”) on the expansion of their facility expiring on May 31, 2039. In addition, the agreement requires the School to fund Amsterdam a reserve amount of \$17,200, which is included in security deposits in the accompanying statements of financial position.

Future minimum lease payments are as follows:

Year ending June 30,	2016	\$ 113,610
	2017	117,021
	2018	120,537
	2019	124,152
	2020	127,875
	Thereafter	<u>3,289,066</u>
		<u>\$ 3,892,261</u>

The School recognizes rent expense on a straight-line basis. Rent expense in excess of payments is recorded as deferred rent in the accompanying statements of financial position. Rent expense under the operating leases for the years ended June 30, 2015 and 2014 amounted to \$1,825,320 and \$1,827,099, respectively.

NOTE 11 - CONTINGENCIES

Certain grants and contracts may be subject to audit by the funding sources. Such audits might result in disallowances of costs submitted for reimbursements. Management is of the opinion that such cost disallowances, if any, will not have a material effect on the accompanying financial statements. Accordingly, no amounts have been provided in the accompanying financial statements for such potential claims.

NEW HEIGHTS ACADEMY CHARTER SCHOOL
(A Not-For-Profit Corporation)
NOTES TO FINANCIAL STATEMENTS
JUNE 30, 2015 AND 2014

NOTE 12 - TEMPORARILY RESTRICTED NET ASSETS

Temporarily restricted net assets consist of the following at June 30,:

	2015	2014
Scholarship	\$ -	\$ 1,000
Study abroad	-	250
	\$ -	\$ 1,250

Net assets for the years ended June 30, 2015 and 2014, were released from donor restrictions by satisfying the purpose specified by donor as follows:

	2015	2014
Scholarships	\$ 3,500	\$ -
Study abroad	250	-
Academic intervention programs	-	5,000
Greening the basement project	-	2,400
	\$ 3,750	\$ 7,400

NOTE 13 - SUBSEQUENT EVENTS

In preparing these financial statements, the School has evaluated events and transactions for potential recognition or disclosure through September 17, 2015, the date the financial statements were available to be issued.

FRUCHTER ROSEN & COMPANY, P.C.

CERTIFIED PUBLIC ACCOUNTANTS

156 WEST 56TH STREET

NEW YORK, NEW YORK 10019

TEL: (212) 957-3600

FAX: (212) 957-3696

INDEPENDENT AUDITORS' REPORT
ON SUPPLEMENTARY INFORMATION

TO THE BOARD OF TRUSTEES OF
NEW HEIGHTS ACADEMY CHARTER SCHOOL

We have audited the financial statements of New Heights Academy Charter School as of and for the year ended June 30, 2015, and have issued our report thereon dated September 17, 2015, which contained an unmodified opinion on those financial statements. Our audit was conducted for the purpose of forming an opinion on the financial statements as a whole. The schedule of functional expenses is presented for purposes of additional analysis and is not a required part of the financial statements. Such information is the responsibility of management and was derived from and relates directly to the underlying accounting and other records used to prepare the financial statements. The information has been subjected to the auditing procedures applied in the audit of the financial statements and certain additional procedures, including comparing and reconciling such information directly to the underlying accounting and other records used to prepare the financial statements or to the financial statements themselves, and other additional procedures in accordance with auditing standards generally accepted in the United States of America. In our opinion, the information is fairly stated in all material respects in relation to the financial statements as a whole.


FRUCHTER ROSEN & COMPANY, P.C.
Certified Public Accountants

New York, New York
September 17, 2015

NEW HEIGHTS ACADEMY CHARTER SCHOOL
(A Not-For-Profit Corporation)
SCHEDULE OF FUNCTIONAL EXPENSES
FOR THE YEARS ENDED JUNE 30,

	2015							
	Program Services				Supporting Services		Total Expenses	2014
	Regular Education	Special Education	Supplemental Education	Total	Management and General	Fundraising		
Salaries	\$ 3,887,402	\$ 1,429,871	\$ 71,153	\$ 5,388,426	\$ 667,299	\$ 17,110	\$ 6,072,835	\$ 6,166,576
Employee benefits and payroll taxes	876,191	322,282	16,037	1,214,510	150,403	3,857	1,368,770	1,497,452
Auditing/Accounting fees	-	-	-	-	30,250	-	30,250	25,250
Professional fees	155,070	-	-	155,070	17,230	-	172,300	15,164
Legal fees	-	-	-	-	-	-	-	13,030
Consultants - technology	3,468	1,339	-	4,807	595	15	5,417	19,192
Consultants - temps	134,975	21,728	-	156,703	-	-	156,703	114,628
Staff development	184,706	71,320	-	256,026	31,706	813	288,545	333,139
Teacher recruitment	21,812	8,422	-	30,234	3,745	96	34,075	34,104
Student recruiting and marketing	31,478	5,067	-	36,545	-	-	36,545	56,355
Student management	28,984	4,666	-	33,650	-	-	33,650	18,790
Student/Staff events	160,827	62,100	-	222,927	27,607	708	251,242	188,767
Food service	151,263	22,292	2,057	175,612	-	-	175,612	202,702
Field trips	30,395	4,893	-	35,288	-	-	35,288	25,370
Supplies and materials	212,550	78,180	3,890	294,620	36,486	936	332,042	299,109
Textbooks	47,355	7,624	-	54,979	-	-	54,979	80,355
Rent and utilities	1,847,345	-	-	1,847,345	304,270	21,733	2,173,348	2,189,572
Maintenance and repairs	118,786	-	-	118,786	19,565	1,397	139,748	155,099
Janitorial	93,350	34,336	1,709	129,395	16,024	411	145,830	121,270
Security	93,749	34,483	1,716	129,948	16,092	413	146,453	53,186
Lease - equipment	23,698	8,717	434	32,849	4,067	104	37,020	23,195
Insurance	63,596	-	-	63,596	10,475	748	74,819	63,445
Dues and fees	18,226	6,704	334	25,264	3,128	80	28,472	44,031
Postage/Printing/Copying	7,477	2,750	137	10,364	1,283	33	11,680	19,320
Telephone and internet	50,299	18,501	921	69,721	8,636	221	78,578	83,954
Depreciation and amortization	321,052	-	-	321,052	52,879	3,777	377,708	401,604
Miscellaneous	874	323	16	1,213	150	5	1,368	5,070
Total	\$ 8,564,928	\$ 2,145,598	\$ 98,404	\$ 10,808,930	\$ 1,401,890	\$ 52,457	\$ 12,263,277	\$ 12,249,729

FRUCHTER ROSEN & COMPANY, P.C.

CERTIFIED PUBLIC ACCOUNTANTS

156 WEST 56TH STREET

NEW YORK, NEW YORK 10019

TEL: (212) 957-3600

FAX: (212) 957-3696

INDEPENDENT AUDITORS' REPORT ON INTERNAL CONTROL OVER FINANCIAL
REPORTING AND ON COMPLIANCE AND OTHER MATTERS BASED ON AN AUDIT OF
FINANCIAL STATEMENTS PERFORMED IN ACCORDANCE WITH
GOVERNMENT AUDITING STANDARDS

TO THE BOARD OF TRUSTEES OF
NEW HEIGHTS ACADEMY CHARTER SCHOOL

We have audited, in accordance with the auditing standards generally accepted in the United States of America and the standards applicable to financial audits contained in *Government Auditing Standards* issued by the Comptroller General of the United States, the financial statements of New Heights Academy Charter School (the "School"), which comprise the statement of financial position as of June 30, 2015, and the related statements of activities, and cash flows for the year then ended, and the related notes to the financial statements, and have issued our report thereon dated September 17, 2015.

Internal Control Over Financial Reporting

In planning and performing our audit of the financial statements, we considered the School's internal control over financial reporting (internal control) to determine the audit procedures that are appropriate in the circumstances for the purpose of expressing our opinion on the financial statements, but not for the purpose of expressing an opinion on the effectiveness of the School's internal control. Accordingly, we do not express an opinion on the effectiveness of the School's internal control.

A *deficiency in internal control* exists when the design or operation of a control does not allow management or employees, in the normal course of performing their assigned functions, to prevent, or detect and correct, misstatements on a timely basis. A *material weakness* is a deficiency, or a combination of deficiencies, in internal control, such that there is a reasonable possibility that a material misstatement of the School's financial statements will not be prevented, or detected and corrected on a timely basis. A *significant deficiency* is a deficiency, or a combination of deficiencies, in internal control that is less severe than a material weakness, yet important enough to merit attention by those charged with governance.

Our consideration of internal control was for the limited purpose described in the first paragraph of this section and was not designed to identify all deficiencies in internal control that might be material weaknesses or significant deficiencies. Given these limitations, during our audit we did not identify any deficiencies in internal control that we consider to be material weaknesses. However, material weaknesses may exist that have not been identified.

TO THE BOARD OF TRUSTEES OF
NEW HEIGHTS ACADEMY CHARTER SCHOOL

Compliance and Other Matters

As part of obtaining reasonable assurance about whether the School's financial statements are free from material misstatement, we performed tests of its compliance with certain provisions of laws, regulations, contracts, and grant agreements, noncompliance with which could have a direct and material effect on the determination of financial statement amounts. However, providing an opinion on compliance with those provisions was not an objective of our audit, and accordingly, we do not express such an opinion. The results of our tests disclosed no instances of noncompliance or other matters that are required to be reported under *Government Auditing Standards*.

We noted certain matters that were reported to the management of the School in a separate letter dated September 17, 2015.

Purpose of this Report

The purpose of this report is solely to describe the scope of our testing of internal control and compliance and the results of that testing, and not to provide an opinion on the effectiveness of the School's internal control or on compliance. This report is an integral part of an audit performed in accordance with *Government Auditing Standards* in considering the School's internal control and compliance. Accordingly, this communication is not suitable for any other purpose.


FRUCHTER ROSEN & COMPANY, P.C.
Certified Public Accountants

New York, New York
September 17, 2015

FRUCHTER ROSEN & COMPANY, P.C.

CERTIFIED PUBLIC ACCOUNTANTS

156 WEST 56TH STREET

NEW YORK, NEW YORK 10019

TEL: (212) 957-3600

FAX: (212) 957-3696

INDEPENDENT AUDITORS' REPORT ON COMPLIANCE FOR
EACH MAJOR PROGRAM AND ON INTERNAL CONTROL OVER
COMPLIANCE REQUIRED BY OMB CIRCULAR A-133

TO THE BOARD OF TRUSTEES OF
NEW HEIGHTS ACADEMY CHARTER SCHOOL

Report on Compliance for Each Major Federal Program

We have audited New Heights Academy Charter School's (the "School") compliance with the types of compliance requirements described in the *OMB Circular A-133 Compliance Supplement* that could have a direct and material effect on each of the School's major federal programs for the year ended June 30, 2015. The School's major federal programs are identified in the summary of auditors' results section of the accompanying schedule of findings and questioned costs.

Management's Responsibility

Management is responsible for compliance with the requirements of laws, regulations, contracts, and grants applicable to its federal programs.

Auditors' Responsibility

Our responsibility is to express an opinion on compliance for each of the School's major federal programs based on our audit of the types of compliance requirements referred to above. We conducted our audit of compliance in accordance with auditing standards generally accepted in the United States of America; the standards applicable to financial audits contained in *Government Auditing Standards*, issued by the Comptroller General of the United States; and OMB Circular A-133, *Audits of States, Local Governments, and Non-Profit Organizations*. Those standards and OMB Circular A-133 require that we plan and perform the audit to obtain reasonable assurance about whether noncompliance with the types of compliance requirements referred to above that could have a direct and material effect on a major federal program occurred. An audit includes examining, on a test basis, evidence about the School's compliance with those requirements and performing such other procedures as we considered necessary in the circumstances.

We believe that our audit provides a reasonable basis for our opinion on compliance for each major federal program. However, our audit does not provide a legal determination of the School's compliance.

Opinion on Each Major Federal Program

In our opinion, the School complied, in all material respects, with the types of compliance requirements referred to above that could have a direct and material effect on each of its major federal programs for the year ended June 30, 2015.

TO THE BOARD OF TRUSTEES OF
NEW HEIGHTS ACADEMY CHARTER SCHOOL

Report on Internal Control over Compliance

Management of the School is responsible for establishing and maintaining effective internal control over compliance with the types of compliance requirements referred to above. In planning and performing our audit of compliance, we considered the School's internal control over compliance with the types of requirements that could have a direct and material effect on each major federal program to determine the auditing procedures that are appropriate in the circumstances for the purpose of expressing an opinion on compliance for each major federal program and to test and report on internal control over compliance in accordance with OMB Circular A-133, but not for the purpose of expressing an opinion on the effectiveness of internal control over compliance. Accordingly, we do not express an opinion on the effectiveness of the School's internal control over compliance.

A deficiency in internal control over compliance exists when the design or operation of a control over compliance does not allow management or employees, in the normal course of performing their assigned functions, to prevent, or detect and correct, noncompliance with a type of compliance requirement of a federal program on a timely basis. A material weakness in internal control over compliance is a deficiency, or combination of deficiencies, in internal control over compliance, such that there is a reasonable possibility that material noncompliance with a type of compliance requirement of a federal program will not be prevented, or detected and corrected, on a timely basis. A significant deficiency in internal control over compliance is a deficiency, or a combination of deficiencies, in internal control over compliance with a type of compliance requirement of a federal program that is less severe than a material weakness in internal control over compliance, yet important enough to merit attention by those charged with governance.

Our consideration of internal control over compliance was for the limited purpose described in the first paragraph of this section and was not designed to identify all deficiencies in internal control over compliance that might be material weaknesses or significant deficiencies. We did not identify any deficiencies in internal control over compliance that we consider to be material weaknesses. However, material weaknesses may exist that have not been identified.

The purpose of this report on internal control over compliance is solely to describe the scope of our testing of internal control over compliance and the results of that testing based on the requirements of OMB Circular A-133. Accordingly, this report is not suitable for any other purpose.


FRUCHTER ROSEN & COMPANY, P.C.
Certified Public Accountants

New York, New York
September 17, 2015

NEW HEIGHTS ACADEMY CHARTER SCHOOL
SCHEDULE OF FINDINGS AND QUESTIONED COSTS
FOR THE YEAR ENDED JUNE 30, 2015

A - SUMMARY OF AUDITORS' RESULTS

1. The auditors' report expresses an unmodified opinion on the financial statements of New Heights Academy Charter School.
2. No significant deficiencies and no material weaknesses were discovered during the audit of the financial statements.
3. No instances of noncompliance material to the financial statements of New Heights Academy Charter School, which would be required to be reported in accordance with *Government Auditing Standards*, were disclosed during the audit.
4. No significant deficiencies and no material weaknesses relating to the audit of the major federal award programs are reported in accordance with OMB Circular A-133.
5. The auditors' report on compliance for the major federal award programs for New Heights Academy Charter School expresses an unmodified opinion on all major federal programs.
6. No audit findings relative to the major federal award programs for New Heights Academy Charter School are reported in this schedule.
7. The programs tested as major programs included:
 Title I Part A, CFDA No. 84.010
8. The threshold used for distinguishing between Type A and B programs was \$300,000.
9. New Heights Academy Charter School qualified as a low-risk auditee.

B - FINDINGS - FINANCIAL STATEMENTS AUDIT

None

C - FINDINGS AND QUESTIONED COSTS - MAJOR FEDERAL AWARD PROGRAMS AUDIT

None

NEW HEIGHTS ACADEMY CHARTER SCHOOL
SCHEDULE OF EXPENDITURES OF FEDERAL AWARDS
FOR THE YEAR ENDED JUNE 30, 2015

Federal Grantor Pass-through Grantor <u>Program Name/Cluster</u>	<u>Federal CFDA Number</u>	<u>Federal Expenditures</u>
U.S. Department of Education:		
Passed through the New York State		
Education Department:		
Title I Part A	84.010	\$ 345,834
Title II Part A	84.367	9,346
Title III Part A	84.365	<u>23,296</u>
Total U.S. Department of Education		<u>378,476</u>
U.S. Department of Agriculture:		
Passed through the New York State		
Education Department:		
Child Nutrition Cluster		
National School Breakfast Program	10.553	16,248
National School Lunch Program	10.555	<u>133,379</u>
Total U.S. Department of Agriculture		<u>149,627</u>
Total Expenditures of Federal Awards		<u>\$ 528,103</u>

See accompanying notes to schedule of expenditures of federal awards.

NEW HEIGHTS ACADEMY CHARTER SCHOOL
NOTES TO SCHEDULE OF EXPENDITURES OF FEDERAL AWARDS
FOR THE YEAR ENDED JUNE 30, 2015

NOTE A - BASIS OF PRESENTATION

The accompanying schedule of expenditures of federal awards includes the federal grant activity of New Heights Academy Charter School and is presented on the accrual basis of accounting for the year ended June 30, 2015. The information in this schedule is presented in accordance with the requirements on OMB Circular A-133, *Audits of States, Local Governments, and Non-Profit Organizations*. Therefore, some amounts presented in this schedule may differ from amounts presented in, or used in the preparation of the basic financial statements.

New York State Education Department

Request for Proposals to Establish Charter Schools Authorized by the Board of Regents

2015-16 Budget & Cash Flow Template

General Instructions and Notes for New Application Budgets and Cash Flows Templates

1	Complete ALL SIX columns in BLUE
2	Enter information into the GRAY cells
3	Cells containing RED triangles in the upper right corner in columns B through G contain guidance on that particular item
4	Funding by School District information for all NYS School district is located on the State Aid website at https://stateaid.nysed.gov/charter/ . Refer to this website for per-pupil tuition funding for all school districts. Rows may be inserted in the worksheet to accomodate additional districts if necessary.
5	The Assumptions column should be completed for all revenue and expense items unless the item is self-explanatory. Where applicable, please reference the page number or section in the application narrative that indicates the assumption being made. For instance, student enrollment would reference the applicable page number in Section I, C of the application narrative.

<Enter School Name Here>

PROJECTED BUDGET FOR 2015-2016

July 1, 2015 to June 30, 2016

Please Note: The student enrollment data is entered below in the Enrollment Section beginning in row 155. This will populate the data in row 10.

Assumptions

DESCRIPTION OF ASSUMPTIONS - Please note assumptions when applicable

	REGULAR EDUCATION	SPECIAL EDUCATION	OTHER	FUNDRAISING	MANAGEMENT & GENERAL	TOTAL
Total Revenue	10,710,765	1,412,262	4,709	-	1,974	12,129,709
Total Expenses	8,796,788	2,202,683	56,937	-	1,894,342	12,950,750
Net Income	1,913,976	(790,421)	(52,228)	-	(1,892,368)	(821,041)
Actual Student Enrollment	737	83				-
Total Paid Student Enrollment	-	-				-

PROGRAM SERVICES

SUPPORT SERVICES

REGULAR EDUCATION	SPECIAL EDUCATION	OTHER	FUNDRAISING	MANAGEMENT & GENERAL	TOTAL
-------------------	-------------------	-------	-------------	----------------------	-------

REVENUE

REVENUES FROM STATE SOURCES

Per Pupil Revenue	CY Per Pupil Rate
District of Location	\$13,877.00
School District 2 (Enter Name)	
School District 3 (Enter Name)	
School District 4 (Enter Name)	
School District 5 (Enter Name)	

10,227,349	-	-	-	-	10,227,349
-	-	-	-	-	-
-	-	-	-	-	-
-	-	-	-	-	-
-	-	-	-	-	-
10,227,349	-	-	-	-	10,227,349

Gen Ed.

Special Education Revenue	
Grants	
Stimulus	
Other	
Other State Revenue	

-	1,139,458	-	-	-	1,139,458
-	-	-	-	-	-
-	-	-	-	-	-
-	-	-	-	-	-

20-60% & >60%

TOTAL REVENUE FROM STATE SOURCES

10,227,349	1,139,458	-	-	-	11,366,807
------------	-----------	---	---	---	------------

REVENUE FROM FEDERAL FUNDING

IDEA Special Needs	
Title I	
Title Funding - Other	
School Food Service (Free Lunch)	
Grants	
Charter School Program (CSP) Planning & Implementation	
Other	
Other Federal Revenue	

-	85,536	-	-	-	85,536
236,550	91,992	-	-	-	328,542
18,089	7,034	-	-	-	25,123
98,690	38,225	2,085	-	-	139,000
-	-	-	-	-	-
-	-	-	-	-	-
-	-	-	-	-	-

TOTAL REVENUE FROM FEDERAL SOURCES

353,329	222,787	2,085	-	-	578,201
---------	---------	-------	---	---	---------

LOCAL and OTHER REVENUE

Contributions and Donations, Fundraising	
Erate Reimbursement	
Interest Income, Earnings on Investments, NYC-DYCD (Department of Youth and Community Developmt.)	
Food Service (Income from meals)	
Text Book	
Other Local Revenue	

56,303	21,808	1,190	-	-	79,300
20,945	8,113	443	-	-	29,500
9,552	3,326	149	-	1,974	15,000
-	-	-	-	-	-
3,384	1,316	-	-	-	4,700
32,382	12,542	684	-	-	45,609
7,520	2,913	159	-	-	10,592

Textbooks & Library Books (FAMIS)

TOTAL REVENUE FROM LOCAL and OTHER SOURCES

130,087	50,017	2,624	-	1,974	184,701
---------	--------	-------	---	-------	---------

TOTAL REVENUE

10,710,765	1,412,262	4,709	-	1,974	12,129,709
------------	-----------	-------	---	-------	------------

EXPENSES

ADMINISTRATIVE STAFF PERSONNEL COSTS

No. of Positions

Executive Management	1.00
Instructional Management	3.00
Deans, Directors & Coordinators	10.00
CFO / Director of Finance	1.00
Operation / Business Manager	1.00
Administrative Staff	13.00

114,783	39,961	1,784	-	23,721	180,250
226,279	108,150	-	-	-	334,429
643,182	250,126	-	-	-	893,308
-	-	-	-	103,000	103,000
-	-	-	-	121,025	121,025
-	-	-	-	552,293	552,293

List exact titles and staff FTE's (Full time equivalent)

Executive Director
Principals and Director of Student Support Services
Department Chairs, Assistant Principals, Deans
Director of Finance
Director of Operations
1 Family Coordinator, 2 Finance Associates, 1 HR

<Enter School Name Here>

PROJECTED BUDGET FOR 2015-2016

July 1, 2015 to June 30, 2016

Please Note: The student enrollment data is entered below in the Enrollment Section beginning in row 155. This will populate the data in row 10.

Assumptions

DESCRIPTION OF ASSUMPTIONS - Please note assumptions when applicable

	REGULAR EDUCATION	SPECIAL EDUCATION	OTHER	FUNDRAISING	MANAGEMENT & GENERAL	TOTAL
Total Revenue	10,710,765	1,412,262	4,709	-	1,974	12,129,709
Total Expenses	8,796,788	2,202,683	56,937	-	1,894,342	12,950,750
Net Income	1,913,976	(790,421)	(52,228)	-	(1,892,368)	(821,041)
Actual Student Enrollment	737	83				-
Total Paid Student Enrollment	-	-				-

PROGRAM SERVICES

SUPPORT SERVICES

REGULAR EDUCATION	SPECIAL EDUCATION	OTHER	FUNDRAISING	MANAGEMENT & GENERAL	TOTAL
-------------------	-------------------	-------	-------------	----------------------	-------

TOTAL ADMINISTRATIVE STAFF	29	984,244	398,238	1,784	-	800,039	2,184,305	
INSTRUCTIONAL PERSONNEL COSTS								
Teachers - Regular	33.00	2,193,760	-	-	-	-	2,193,760	Teachers
Teachers - SPED	8.00	-	579,190	-	-	-	579,190	Learning Strategists
Substitute Teachers	-	-	-	-	-	-	-	Outsourced
Teaching Assistants	2.00	50,526	19,649	-	-	-	70,175	Teaching Assistants
Specialty Teachers	12.00	647,274	251,718	-	-	-	898,992	2 ESL, 2 Phys Ed, 2 Italian, 1 Japanese, 1 Music, 1 Dance,
Aides	5.00	19,029	7,370	402	-	-	26,801	Part Time Monitors
Therapists & Counselors	6.00	277,244	107,817	-	-	-	385,061	Social Workers
Other	-	128,155	49,638	2,708	-	-	180,500	After School, Saturday Academy, Summer School, Special
TOTAL INSTRUCTIONAL	66	3,315,988	1,015,381	3,110	-	-	4,334,479	
NON-INSTRUCTIONAL PERSONNEL COSTS								
Nurse	-	-	-	-	-	-	-	
Librarian	-	-	-	-	-	-	-	
Custodian	2.00	-	-	-	-	88,012	88,012	1 Facility Associates, 1 Facility Assistant
Security	1.00	-	-	-	-	38,370	38,370	Security Guard
Other	4.00	-	-	-	-	95,384	95,384	2 Full Time and 2 Part Time Lunchroom Staff
TOTAL NON-INSTRUCTIONAL	7	-	-	-	-	221,766	221,766	
SUBTOTAL PERSONNEL SERVICE COSTS	102	4,300,232	1,413,619	4,894	-	1,021,805	6,740,550	
PAYROLL TAXES AND BENEFITS								
Payroll Taxes		357,180	124,351	5,553	-	73,814	560,898	
Fringe / Employee Benefits		494,991	172,330	7,695	-	102,294	777,310	
Retirement / Pension		145,941	50,809	2,269	-	30,160	229,179	
TOTAL PAYROLL TAXES AND BENEFITS		998,112	347,490	15,517	-	206,268	1,567,387	
TOTAL PERSONNEL SERVICE COSTS		5,298,344	1,761,109	20,411	-	1,228,073	8,307,937	
CONTRACTED SERVICES								
Accounting / Audit		-	-	-	-	35,000	35,000	
Legal		-	-	-	-	5,000	5,000	
Management Company Fee		-	-	-	-	-	-	
Nurse Services		-	-	-	-	-	-	
Food Service / School Lunch		-	-	-	-	-	-	
Payroll Services		14,328	4,988	223	-	2,961	22,500	
Special Ed Services		-	-	-	-	-	-	
Titement Services (i.e. Title I)		-	-	-	-	-	-	
Other Purchased / Professional / Consulting		95,520	33,255	1,485	-	19,740	150,000	Professional Fees, substitute Teachers, Outside Computer
TOTAL CONTRACTED SERVICES		109,848	38,243	1,708	-	62,701	212,500	
SCHOOL OPERATIONS								
Board Expenses		-	-	-	-	9,000	9,000	
Classroom / Teaching Supplies & Materials		109,186	38,888	23,496	-	-	171,570	Including After School Program
Special Ed Supplies & Materials		-	20,000	-	-	-	20,000	
Textbooks / Workbooks		69,350	24,700	950	-	-	95,000	Textbooks, Library Books
Supplies & Materials other		-	-	-	-	-	-	
Equipment / Furniture		-	-	-	-	-	-	

<Enter School Name Here>

PROJECTED BUDGET FOR 2015-2016

July 1, 2015 to June 30, 2016

Please Note: The student enrollment data is entered below in the Enrollment Section beginning in row 155. This will populate the data in row 10.

Assumptions

DESCRIPTION OF ASSUMPTIONS - Please note assumptions when applicable

	REGULAR EDUCATION	SPECIAL EDUCATION	OTHER	FUNDRAISING	MANAGEMENT & GENERAL	TOTAL
Total Revenue	10,710,765	1,412,262	4,709	-	1,974	12,129,709
Total Expenses	8,796,788	2,202,683	56,937	-	1,894,342	12,950,750
Net Income	1,913,976	(790,421)	(52,228)	-	(1,892,368)	(821,041)
Actual Student Enrollment	737	83				-
Total Paid Student Enrollment	-	-				-

PROGRAM SERVICES

SUPPORT SERVICES

	REGULAR EDUCATION	SPECIAL EDUCATION	OTHER	FUNDRAISING	MANAGEMENT & GENERAL	TOTAL
--	-------------------	-------------------	-------	-------------	----------------------	-------

Telephone	14,863	5,174	231		3,072	23,340
Technology	41,397	14,412	644		8,555	65,008
Student Testing & Assessment	-	-	-	-	-	-
Field Trips	35,280	13,720	-	-	-	49,000
Transportation (student)	-	-	-	-	-	-
Student Services - other	130,750	46,569	1,791	-	-	179,110
Office Expense	48,460	16,871	753	-	10,015	76,100
Staff Development	137,880	53,620	-	-	11,900	203,400
Staff Recruitment	24,835	8,646	386	-	5,132	39,000
Student Recruitment / Marketing	18,000	7,000	-	-	18,000	43,000
School Meals / Lunch	135,130	48,129	1,851	-	-	185,110
Travel (Staff)	-	-	-	-	-	-
Fundraising	-	-	-	-	-	-
Other	73,936	25,740	1,149	-	15,279	116,105

TOTAL SCHOOL OPERATIONS

	839,068	323,470	31,251	-	80,953	1,274,743
--	---------	---------	--------	---	--------	-----------

FACILITY OPERATION & MAINTENANCE

Insurance	64,584	-	-	-	13,228	77,812
Janitorial	93,228	32,457	1,449	-	19,266	146,400
Building and Land Rent / Lease	1,656,102	-	-	-	339,202	1,995,304
Repairs & Maintenance	163,703	-	-	-	33,530	197,233
Equipment / Furniture	36,566	12,730	568	-	7,557	57,421
Security	99,596	34,674	1,548	-	20,582	156,400
Utilities	164,340	-	-	-	33,660	198,000

TOTAL FACILITY OPERATION & MAINTENANCE

	2,278,118	79,861	3,566	-	467,024	2,828,570
--	-----------	--------	-------	---	---------	-----------

DEPRECIATION & AMORTIZATION

	271,410	-	-	-	55,590	327,000
--	---------	---	---	---	--------	---------

DISSOLUTION ESCROW & RESERVES / CONTINGENCY

	-	-	-	-	-	-
--	---	---	---	---	---	---

TOTAL EXPENSES

	8,796,788	2,202,683	56,937	-	1,894,342	12,950,750
--	-----------	-----------	--------	---	-----------	------------

NET INCOME

	1,913,976	(790,421)	(52,228)	-	(1,892,368)	(821,041)
--	-----------	-----------	----------	---	-------------	-----------

ENROLLMENT - *School Districts Are Linked To Above Entries*

	REGULAR EDUCATION	SPECIAL EDUCATION	TOTAL ENROLLED
District of Location	737	83	820
School District 2 (Enter Name)			-
School District 3 (Enter Name)			-
School District 4 (Enter Name)			-
School District 5 (Enter Name)			-
TOTAL ENROLLMENT	737	83	820
REVENUE PER PUPIL	14,533	17,015	6
EXPENSES PER PUPIL	11,936	26,538	69

Special Event Staff \$52K, Dues & Fees \$ 335,500, Student

Copy Machine Lease



Audited Financial Statement Checklist

Created: 10/29/2015

Last updated: 10/30/2015

Page 1

Charter School Name:

1. Please check each item that is included in the 2014-15 Audited Financial Statement submitted for your charter school.

	Yes/No
Audited Financial Statements (including report on compliance and report on internal control over financial reporting)	Yes
Single Audit (if applicable)	Not Applicable
CSP Agreed Upon Procedures (if applicable)	Not Applicable
Management Letter	No
Report on Extracurricular Student Activity Accounts (if applicable)	No
Corrective Action Plans for any Findings	Not Applicable

2. Please indicated if there is a finding(s) noted in any of the following sections of your charter school's 2014-15 Audited Financial Statement.

	Yes/No
Report on Compliance	No
Report on Internal Control over Financial Reporting	No
Single Audit	No
CSP Agreed Upon Procedures Report	Not Applicable
Management Letter	Not Applicable

Thank you.



Appendix E: Disclosure of Financial Interest Form

Created: 10/02/2015

Last updated: 10/29/2015

Page 1

All trustees who served on an education corporation governing one or more charter schools during the 2014-2015 school year must complete the form in Appendix E (Disclosure of Financial Interest Form). **The Disclosure of Financial Interest Forms are due on November 1, 2015. A link to a safe and secure form that each Trustee must complete by the November 1, 2015 deadline will be provide here by September 1, 2015 or sooner.**

ALL charter schools or merged education corporations must complete the Board of Trustees Membership Table within the online portal in Appendix F (Board of Trustees Membership Table). The Board of Trustees Membership Table must be submitted by August 1, 2015.

Regents-authorized charter schools must upload a complete set of board of trustee Meeting Minutes from July 2014-June 2015 into Appendix G (Board Minutes). Board of Trustee Meeting Minutes must be submitted by August 1, 2015.

Yes, each member of the school's Board of Trustees will receive a link to the Disclosure of Financial Interest Form.

Yes

Thank you.



Appendix F: BOT Membership Table

Created: 07/29/2015

Last updated: 08/01/2015

Page 1

1. Current Board Member Information

	Trustee Name	Email Address	Committee Affiliation(s)	Voting Member? (Y/N)	Area of Expertise, and/or Additional Role and School (parent, staff member, etc.)	Number of Terms Served and Length of Each (Include election date and term expiration)
1	Summer Barghouti		Trustee/Member	Yes	Education Accountability Committee Chair	1
2	Jessenia Francisco		Trustee/Member	Yes	Fundraising Committee Member	1
3	Gail Grossmann		Chair/Board President	Yes	Chairperson	4
4	Roland Guevara		Trustee/Member	Yes	Fundraising Committee Chair	1
5	Anne Kofol Hogarty		Chair/Board President	Yes	Education Accountability Committee Member	1
6	Dylan Hogarty		Vice Chair/Vice President	Yes	Vice Chairperson	1
7	Michael Jones		Trustee/Member	Yes	Finance Committee Member	1
8	Quincy McLain		Treasurer	Yes	Finance Committee Chair	1
9	Julie Torres		Trustee/Member	Yes	Education Accountability Committee Member	1
10	Rebeca Wolfe		Secretary	Yes	Staff Representative/Teacher	1
11						
12						
13						
14						
15						
16						

17						
18						
19						
20						

2. Total Number of Members Joining Board during the 2014-15 school year

3

3. Total Number of Members Departing the Board during the 2014-15 school year

4

4. According to the School's by-laws, what is the maximum number of trustees that may comprise the governing board?

15

5. How many times did the Board meet during the 2014-15 school year?

11

6. How many times will the Board meet during the 2015-16 school year?

12

Thank you.

New Heights Academy Charter School makes good faith efforts to attract and retain students with disabilities and students who are eligible applicants for the free and reduced price lunch program. Our percentage of students eligible for free or reduced lunch is 96% compared to the district percentage of 89%. Our percentage of Special Education students is 12% compared to the district percentage of 15.4%.

New Heights' ELL population is 18% compared to the district percentage of 30.4%. The percentage of ELL students in the middle school is higher than in the high school. We have middle school grades with a 27% ELL population. This percentage drops to 3.6% in the 12th grade. We will continue our outreach throughout the district with materials available in both Spanish and English and targeted outreach in Spanish publications and radio stations.



Appendix I: Teacher and Administrator Attrition

Created: 07/30/2015

Last updated: 08/01/2015

Report changes in teacher and administrator staffing.

Page 1

Charter School Name:

Instructions for completing the Teacher and Administrator Attrition Tables

ALL charter schools should provide, for teachers and administrators only, the full time equivalent (FTE) of staff on June 30, 2014, the FTE for added staff from July 1, 2014 through June 30, 2015, and the FTE for any departed staff from July 1, 2014 through June 30, 2015 using the two tables provided.

2013-14 Teacher Attrition Table

	FTE Teachers on June 30, 2014	FTE Teachers Additions 7/1/14 – 6/30/15	FTE Teacher Departures 7/1/14 – 6/30/15
	45	29	12

2013-14 Administrator Position Attrition Table

	FTE Administrator Positions On 6/30/2014	FTE Administrator Additions 7/1/14 – 6/30/15	FTE Administrator Departures 7/1/14 – 6/30/15
	7	4	4

Thank you



Appendix J: Uncertified Teachers

Created: 07/30/2015

Last updated: 07/31/2015

"thirty per centum or 5 teachers, whichever is less"

To comply with NYS Education Law Section 2854(3)(a-1), please report the (FTE) count of uncertified and certified teaching staff as of the last day of school for the 2014-15 school year.

Page 1

Charter School Name:

Note Definition of FTE:

Full-time equivalent employees equal the number of employees on full-time schedules plus the number of employees on part-time schedules converted to a full-time basis. The number of full-time equivalent employees in each industry is the product of the total number of employees and the ratio of average weekly hours per employee for all employees to average weekly hours per employee on full-time schedules. An industry's full-time equivalent employment will be less than the number of its employees on full- and part-time schedules, unless it has no part-time employees (U.S. Commerce--Bureau of Economic Analysis at: http://www.bea.gov/faq/index.cfm?faq_id=368#sthash.8Rbj89kq.dpuf)

How many **UNCERTIFIED** Full-Time Equivalent Teachers were employed in the charter school as of last day of school in 2014-15?

For each applicable category (i-iv), input the relevant full time equivalent (FTE) count of teachers.

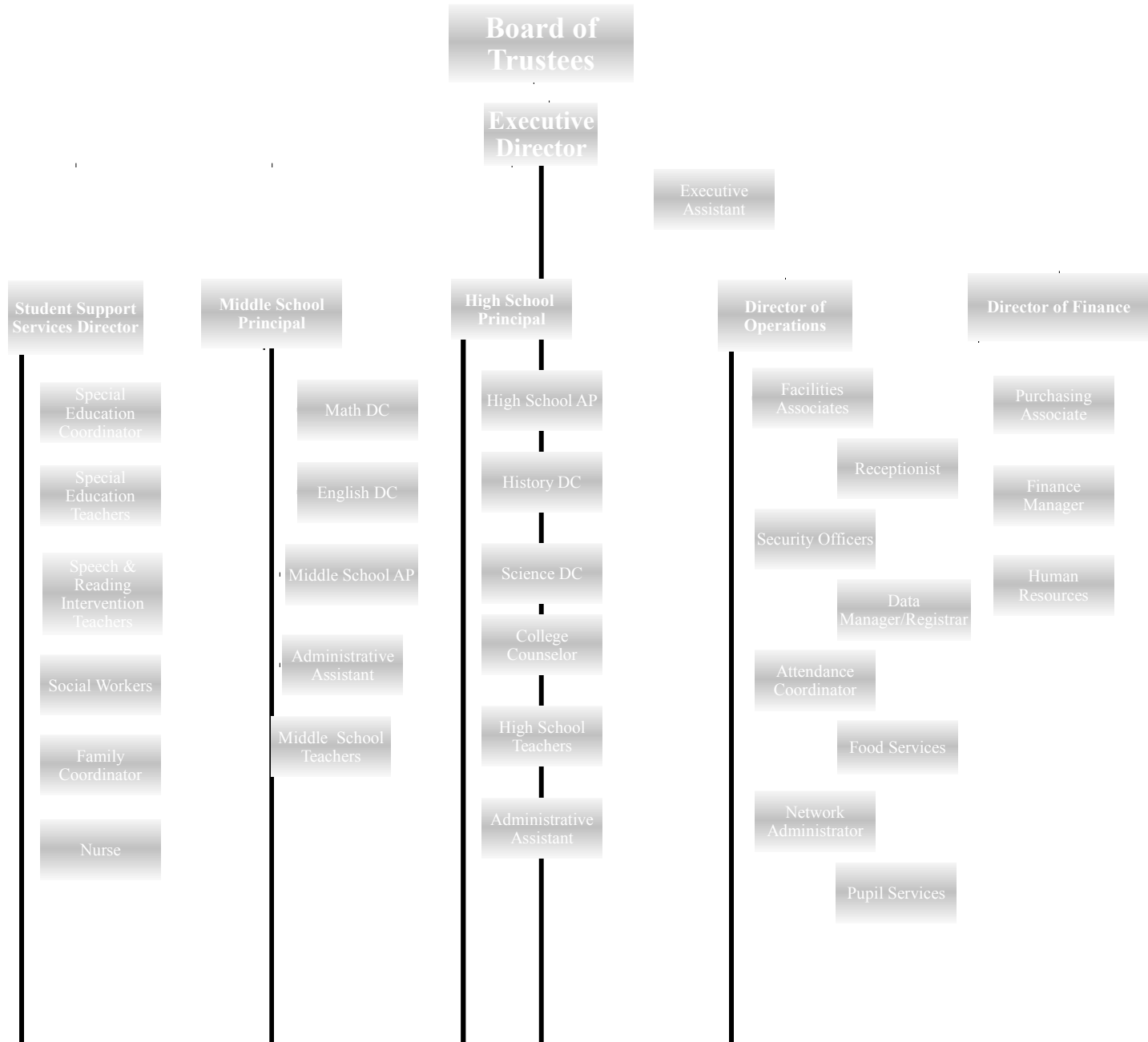
	FTE - (June 30, 2015)
(i) uncertified teachers with at least three years of elementary, middle or secondary classroom teaching experience	6
(ii) individuals who are tenured or tenure track college faculty	0
(iii) individuals with two years satisfactory experience through Teach for America	0
(iv) individuals who possess exceptional business, professional, artistic, athletic, or military experience	0
FTE count of uncertified teachers who do not fit into any of the four statutory categories	3
Total	9.0

How many **CERTIFIED** Full-Time Equivalent Teachers were employed in the charter school as of the last day of school in 2014-15?

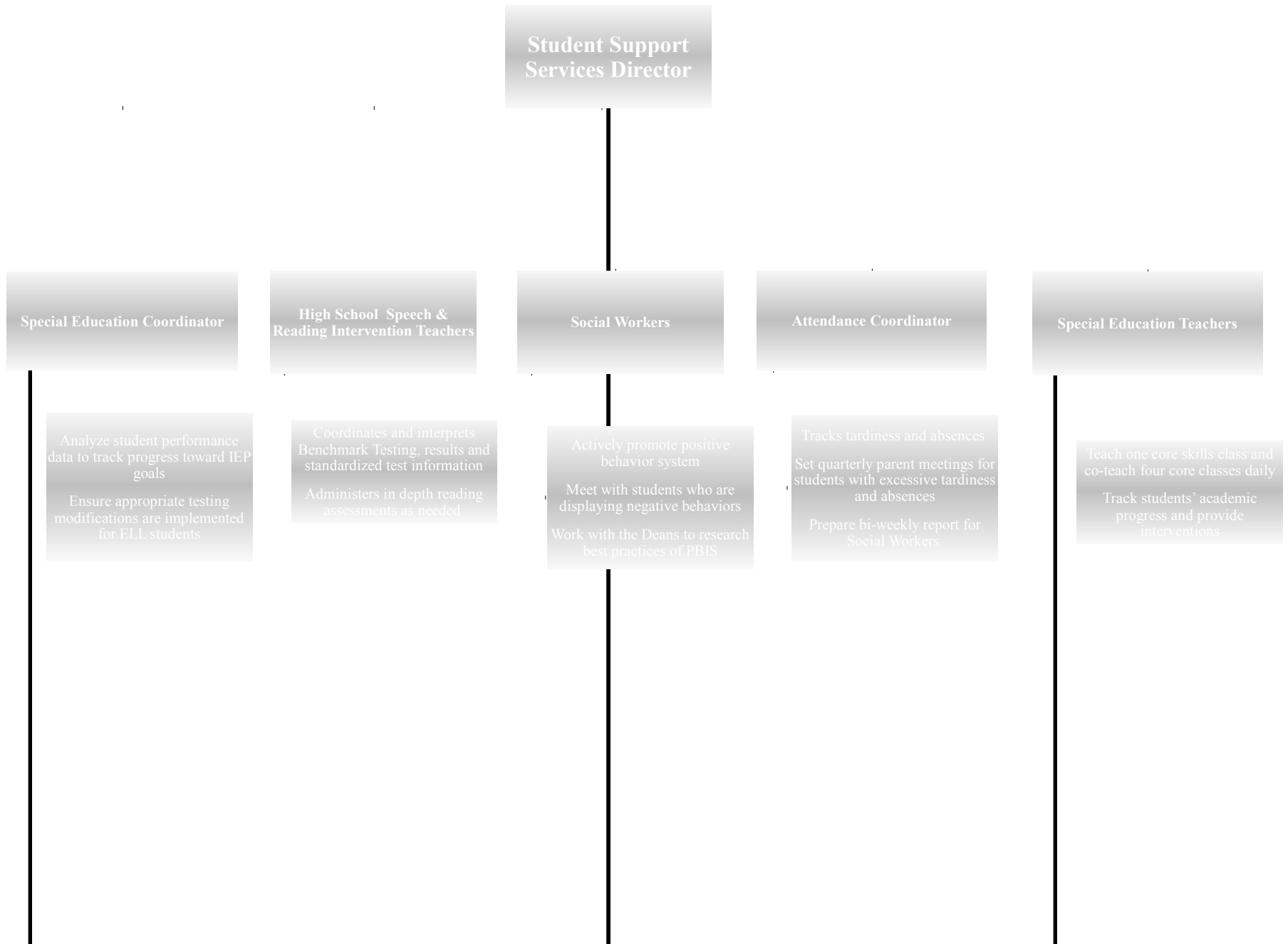
39

Thank you.

NHACS Organization Chart 2014-15



NHACS Organization Chart 2014-15



NHACS Organization Chart 2014-15

Middle School
Principal

Math DC

English DC

Middle School Dean

Middle School Teachers

Administrative Assistant

Teach interventions in Math
Collaborate with teachers to
develop rubrics
Oversee creation of plans to
vertically align curriculum

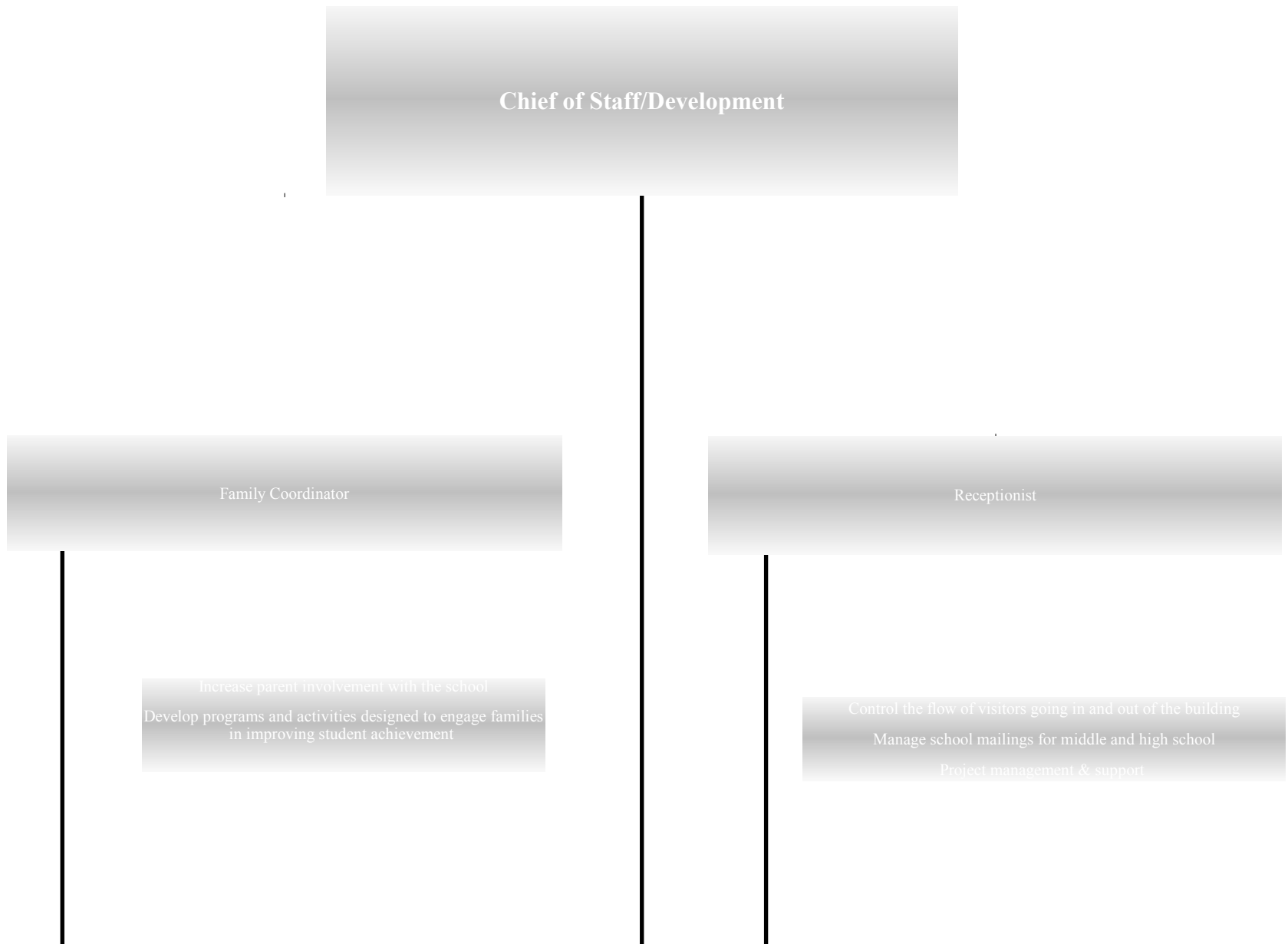
Teach interventions in ELA
Collaborate with teachers to
develop rubrics
Oversee lesson plans to
vertically align curriculum

Establish a positive and
structured educational plan for
Advisory Lessons
Create and monitor behavioral
plans

Plan units/lessons with
respective DC
Conduct baseline testing at the
beginning of the school year and
before the start of each unit.

Track calendars, schedules and
program changes
Prepare reports
Communicate with parents and
translate when necessary
Take notes during meetings

NHACS Organization Chart 2014-15



NHACS Organization Chart 2014-15

Director of Finance

Purchasing Associate

Purchasing all materials for NHACS
Coordinate and reconcile cycle inventory counts
Responsible for accurate FAMIS purchasing and reconciliation
Bank Reconciliations

Finance Manager

Manage accurate day-to-day transactions and bookkeeping for the school
Maintain filing system for all financial documentation
Maintain the General Ledger
Prepare monthly financial statements

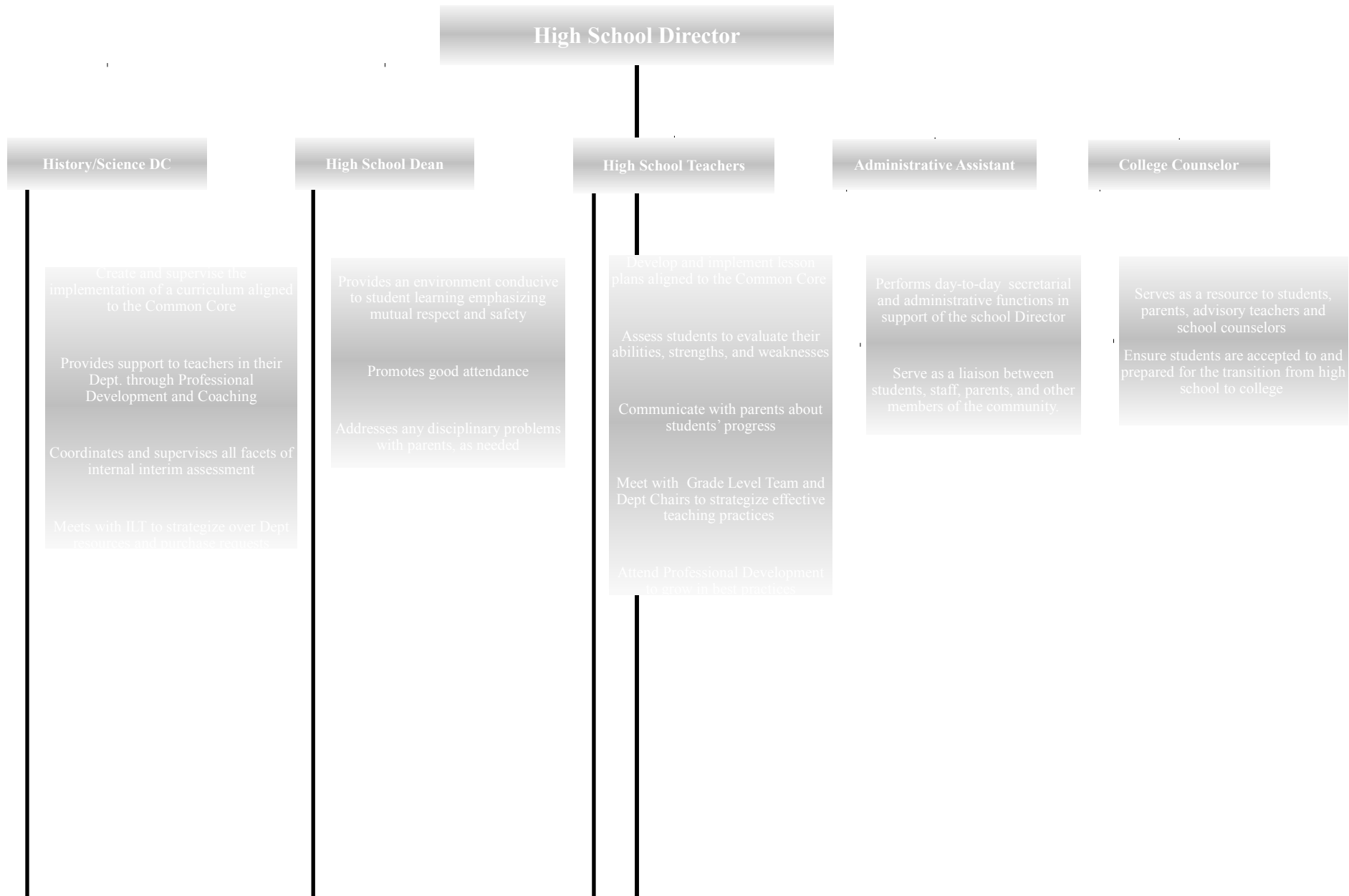
Human Resources

Responsible for recruiting, screening, interviewing and placing workers
Handle employee relations, payroll and benefits and training.

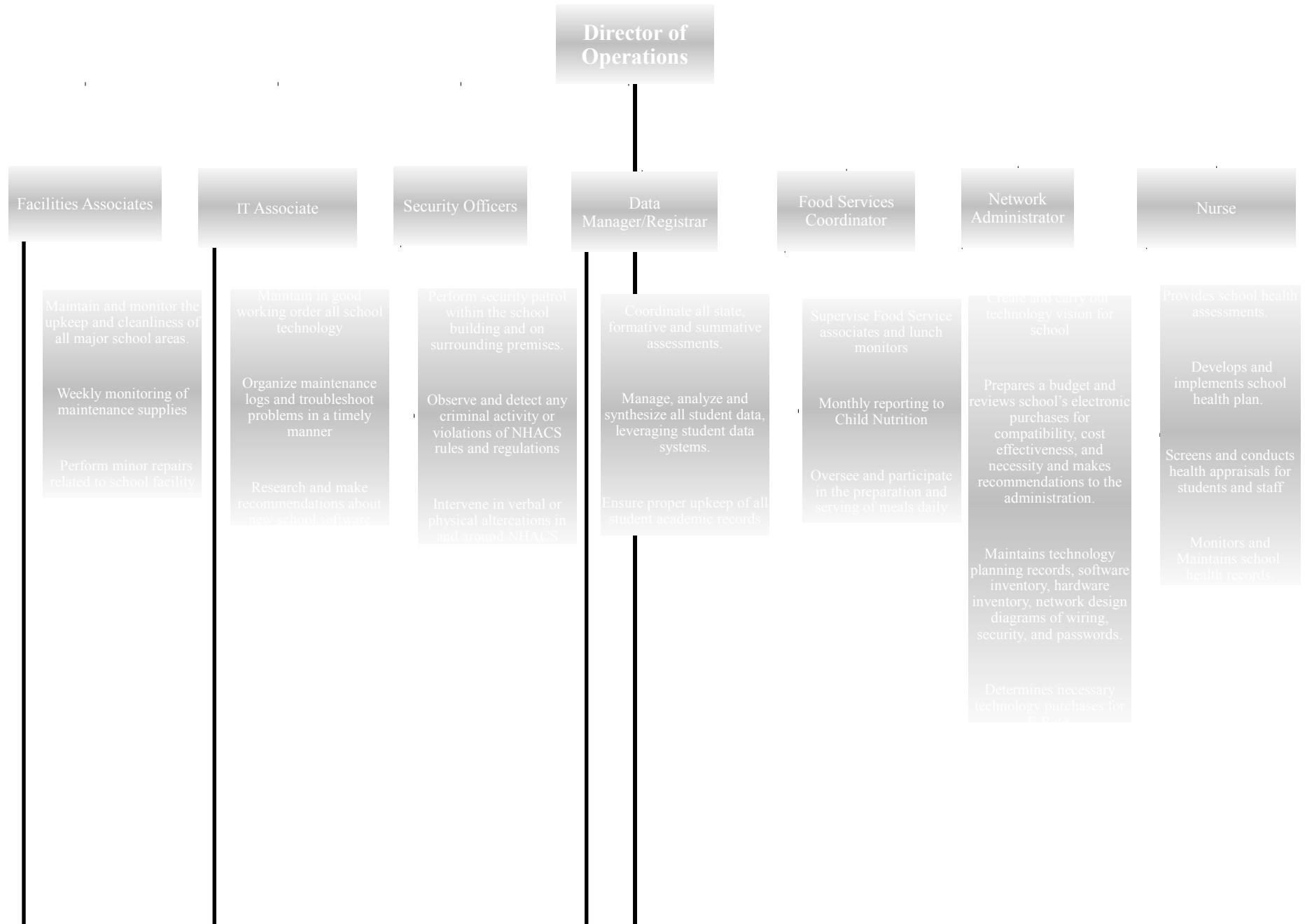
Pupil Services

Daily attendance records and reporting
Running ATS reports for all NHACS staff
Maintaining Immunization Records

NHACS Organization Chart 2014-15



NHACS Organization Chart 2014-15



MISSION STATEMENT

Our mission is to graduate students who are prepared for success in college and in life

VISION STATEMENT

Pillar	Truth Statement	Common Language
Perseverance	I am Driven	I DO NOT QUIT
Responsibility	I am Accountable	I DO MY BEST WORK
Integrity	I act and speak Honestly	I AM MY BEST SELF
Discipline	I work hard and exercise self-control	I OFFER NO EXCUSES
Enthusiasm	I am passionate about learning	I CAN GET SMARTER

The New Heights Academy Charter School family embodies the core values of perseverance, responsibility, integrity, discipline, and enthusiasm. The school culture is characterized by transparent communication, trust in community members, and an appreciation for diversity of perspectives. New Heights scholars are engaged in a rigorous, college preparatory curriculum which emphasizes critical thinking, curiosity, competence, confidence, and control. New Heights Academy Charter School is committed to ensuring 90% of students achieve mastery of 90% of the common core learning standards by the year 2018 for the sole purpose of preparing scholars for success in the academic collegiate environment.

P.R.I.D.E. Pillars

New Heights Academy Charter School has five P.R.I.D.E pillars that guide the decisions, and actions, of all community members for the purpose of creating a dynamic school culture that supports the individual needs of all students.

Required Form: 2014-15 Appendix E - Trustee Disclosure of Financial Interest Form

Created Monday, August 31, 2015

<https://nysed.fluidsurveys.com/account/surveys/537586/responses/export//s/Regents-Appendix-E-BOT-Form/bc7bd93f769a3ac9c6>

Page 1

Please open the link to this form using **Google Chrome** as your browser. Doing so will allow you to input your signature on page 2 of the form. Thank you.

1. TRUSTEE NAME

	First Name	Last Name
Trustee Name	Dylan	Hogarty

2. *Your Home Address:

2. *Your Home Address: Street Address	
2. *Your Home Address: City/State	
2. *Your Home Address: Zip	

3. *Your Business Address

3. *Your Business Address Street Address	
3. *Your Business Address City/State	
3. *Your Business Address Zip	

4. *Daytime Phone Number:

--

5. *E-mail Address:

--

6. I am a Trustee of a parent education corporation listed below which governs one or more charter schools.

No, I am not.

7. Select the name of the education corporation that operates a single charter school.

NEW HEIGHTS ACADEMY CS (NYC CHANCELLOR) 310600860887

8. Select all positions you have held on the Board:

(check all that apply)

-
- Vice Chair/Vice President
-

9. Are you a trustee and also an employee of the school?

No

10. Are you a trustee and an employee or agent of the management company or institutional partner of the charter school?

No

11. Have you or any of your immediate family members or any persons who live with you in your house had an interest in or engaged in a transaction with the charter school during the time you have served on the board, and in the six-month period prior to such service?

No

12. Are you a member, director, officer or employee of an organization formally partnered with a school that is doing business with the charter school and in which such entity, during your tenure as a trustee, you and/or your immediate family member or person living in your house had a financial interest or relationship?

No

Signature of Trustee

A handwritten signature in black ink, consisting of a large, rounded initial followed by a long, horizontal, slightly wavy line that ends in a small loop.

Thank you.

Required Form: 2014-15 Appendix E - Trustee Disclosure of Financial Interest Form

Created Tuesday, September 01, 2015

<https://nysed.fluidsurveys.com/account/surveys/537586/responses/export//s/Regents-Appendix-E-BOT-Form/39bcd73a3ea827776>

Page 1

Please open the link to this form using **Google Chrome** as your browser. Doing so will allow you to input your signature on page 2 of the form. Thank you.

1. TRUSTEE NAME

	First Name	Last Name
Trustee Name	Roland	Guevara

2. *Your Home Address:

2. *Your Home Address: Street Address	
2. *Your Home Address: City/State	
2. *Your Home Address: Zip	

3. *Your Business Address

3. *Your Business Address Street Address	
3. *Your Business Address City/State	
3. *Your Business Address Zip	

4. *Daytime Phone Number:

--

5. *E-mail Address:

--

6. I am a Trustee of a parent education corporation listed below which governs one or more charter schools.

<i>No, I am not.</i>

7. Select the name of the education corporation that operates a single charter school.

<i>NEW HEIGHTS ACADEMY CS (NYC CHANCELLOR) 310600860887</i>

8. Select all positions you have held on the Board:

(check all that apply)

-
- Other, please specify...: Fundraising chair
-

9. Are you a trustee and also an employee of the school?

No

10. Are you a trustee and an employee or agent of the management company or institutional partner of the charter school?

No

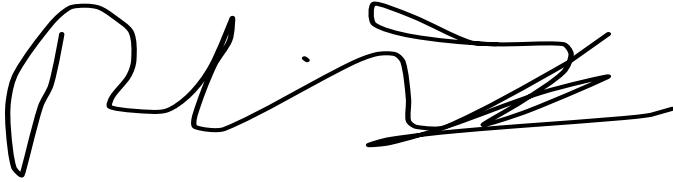
11. Have you or any of your immediate family members or any persons who live with you in your house had an interest in or engaged in a transaction with the charter school during the time you have served on the board, and in the six-month period prior to such service?

No

12. Are you a member, director, officer or employee of an organization formally partnered with a school that is doing business with the charter school and in which such entity, during your tenure as a trustee, you and/or your immediate family member or person living in your house had a financial interest or relationship?

No

Signature of Trustee

A handwritten signature in black ink, consisting of a large, stylized initial 'R' followed by a series of connected loops and a horizontal line at the end.

Thank you.

Required Form: 2014-15 Appendix E - Trustee Disclosure of Financial Interest Form

Created Tuesday, September 08, 2015

<https://nysed.fluidsurveys.com/account/surveys/537586/responses/export//s/Regents-Appendix-E-BOT-Form/e26ff0ec78ea5d1d0d>

Page 1

Please open the link to this form using **Google Chrome** as your browser. Doing so will allow you to input your signature on page 2 of the form. Thank you.

1. TRUSTEE NAME

	First Name	Last Name
Trustee Name	Anne	Hogarty

2. *Your Home Address:

2. *Your Home Address: Street Address	
2. *Your Home Address: City/State	
2. *Your Home Address: Zip	

3. *Your Business Address

3. *Your Business Address Street Address	
3. *Your Business Address City/State	
3. *Your Business Address Zip	

4. *Daytime Phone Number:

--

5. *E-mail Address:

--

6. I am a Trustee of a parent education corporation listed below which governs one or more charter schools.

No, I am not.

7. Select the name of the education corporation that operates a single charter school.

NEW HEIGHTS ACADEMY CS (NYC CHANCELLOR) 310600860887

8. Select all positions you have held on the Board:

(check all that apply)

(No response)

9. Are you a trustee and also an employee of the school?

No

10. Are you a trustee and an employee or agent of the management company or institutional partner of the charter school?

No

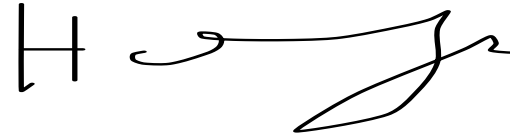
11. Have you or any of your immediate family members or any persons who live with you in your house had an interest in or engaged in a transaction with the charter school during the time you have served on the board, and in the six-month period prior to such service?

No

12. Are you a member, director, officer or employee of an organization formally partnered with a school that is doing business with the charter school and in which such entity, during your tenure as a trustee, you and/or your immediate family member or person living in your house had a financial interest or relationship?

No

Signature of Trustee

A handwritten signature in black ink, consisting of a series of connected loops and a long horizontal stroke at the end.A handwritten signature in black ink, starting with a vertical line, followed by a horizontal line, and ending with a large, stylized flourish.

Thank you.

Required Form: 2014-15 Appendix E - Trustee Disclosure of Financial Interest Form

Created Friday, September 11, 2015

<https://nysed.fluidsurveys.com/account/surveys/537586/responses/export//s/Regents-Appendix-E-BOT-Form/482cd9232e82135b6>

Page 1

Please open the link to this form using **Google Chrome** as your browser. Doing so will allow you to input your signature on page 2 of the form. Thank you.

1. TRUSTEE NAME

	First Name	Last Name
Trustee Name	Keia	Cole

2. *Your Home Address:

2. *Your Home Address: Street Address	
2. *Your Home Address: City/State	
2. *Your Home Address: Zip	

3. *Your Business Address

3. *Your Business Address Street Address	
3. *Your Business Address City/State	
3. *Your Business Address Zip	

4. *Daytime Phone Number:

--

5. *E-mail Address:

--

6. I am a Trustee of a parent education corporation listed below which governs one or more charter schools.

<i>No, I am not.</i>

7. Select the name of the education corporation that operates a single charter school.

<i>NEW HEIGHTS ACADEMY CS (NYC CHANCELLOR) 310600860887</i>

8. Select all positions you have held on the Board:

(check all that apply)

(No response)

9. Are you a trustee and also an employee of the school?

No

10. Are you a trustee and an employee or agent of the management company or institutional partner of the charter school?

No

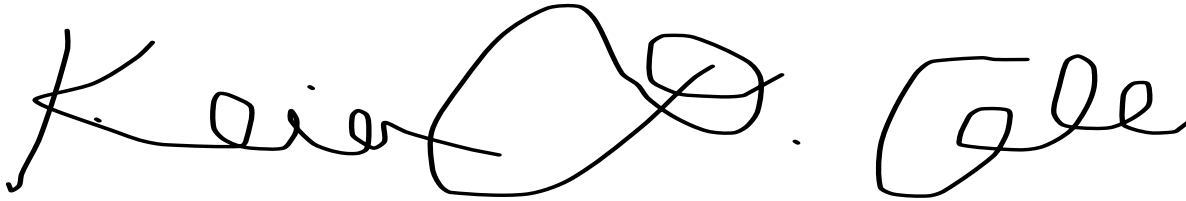
11. Have you or any of your immediate family members or any persons who live with you in your house had an interest in or engaged in a transaction with the charter school during the time you have served on the board, and in the six-month period prior to such service?

No

12. Are you a member, director, officer or employee of an organization formally partnered with a school that is doing business with the charter school and in which such entity, during your tenure as a trustee, you and/or your immediate family member or person living in your house had a financial interest or relationship?

No

Signature of Trustee

A handwritten signature in black ink, appearing to read "Kai O. Gale". The signature is written in a cursive style with a large, looped "O" and a distinct "Gale" at the end.

Thank you.

Required Form: 2014-15 Appendix E - Trustee Disclosure of Financial Interest Form

Created Tuesday, September 15, 2015

<https://nysed.fluidsurveys.com/account/surveys/537586/responses/export//s/Regents-Appendix-E-BOT-Form/ad0e994b7a4c470eb>

Page 1

Please open the link to this form using **Google Chrome** as your browser. Doing so will allow you to input your signature on page 2 of the form. Thank you.

1. TRUSTEE NAME

	First Name	Last Name
Trustee Name	Michael	Jones

2. *Your Home Address:

2. *Your Home Address: Street Address	
2. *Your Home Address: City/State	
2. *Your Home Address: Zip	

3. *Your Business Address

3. *Your Business Address Street Address	
3. *Your Business Address City/State	
3. *Your Business Address Zip	

4. *Daytime Phone Number:

--

5. *E-mail Address:

--

6. I am a Trustee of a parent education corporation listed below which governs one or more charter schools.

No, I am not.

7. Select the name of the education corporation that operates a single charter school.

NEW HEIGHTS ACADEMY CS (NYC CHANCELLOR) 310600860887

8. Select all positions you have held on the Board:

(check all that apply)

-
- Other, please specify...: Board Member
-

9. Are you a trustee and also an employee of the school?

No

10. Are you a trustee and an employee or agent of the management company or institutional partner of the charter school?

No

11. Have you or any of your immediate family members or any persons who live with you in your house had an interest in or engaged in a transaction with the charter school during the time you have served on the board, and in the six-month period prior to such service?

No

12. Are you a member, director, officer or employee of an organization formally partnered with a school that is doing business with the charter school and in which such entity, during your tenure as a trustee, you and/or your immediate family member or person living in your house had a financial interest or relationship?

No

Signature of Trustee

A handwritten signature in black ink, consisting of several connected strokes. It starts with a long horizontal line on the left, followed by a sharp upward and rightward stroke, then a long horizontal line across the middle, and finally a series of loops and a small flourish on the right side.

Thank you.

Required Form: 2014-15 Appendix E - Trustee Disclosure of Financial Interest Form

Created Thursday, September 24, 2015

<https://nysed.fluidsurveys.com/account/surveys/537586/responses/export//s/Regents-Appendix-E-BOT-Form/2aeea3d9629aa85f61>

Page 1

Please open the link to this form using **Google Chrome** as your browser. Doing so will allow you to input your signature on page 2 of the form. Thank you.

1. TRUSTEE NAME

	First Name	Last Name
Trustee Name	Gail	Grossmann

2. *Your Home Address:

2. *Your Home Address: Street Address	
2. *Your Home Address: City/State	
2. *Your Home Address: Zip	

3. *Your Business Address

3. *Your Business Address Street Address	
3. *Your Business Address City/State	
3. *Your Business Address Zip	

4. *Daytime Phone Number:

--

5. *E-mail Address:

--

6. I am a Trustee of a parent education corporation listed below which governs one or more charter schools.

No, I am not.

7. Select the name of the education corporation that operates a single charter school.

NEW HEIGHTS ACADEMY CS (NYC CHANCELLOR) 310600860887

8. Select all positions you have held on the Board:

(check all that apply)

-
- Chair/President
-

9. Are you a trustee and also an employee of the school?

No

10. Are you a trustee and an employee or agent of the management company or institutional partner of the charter school?

No

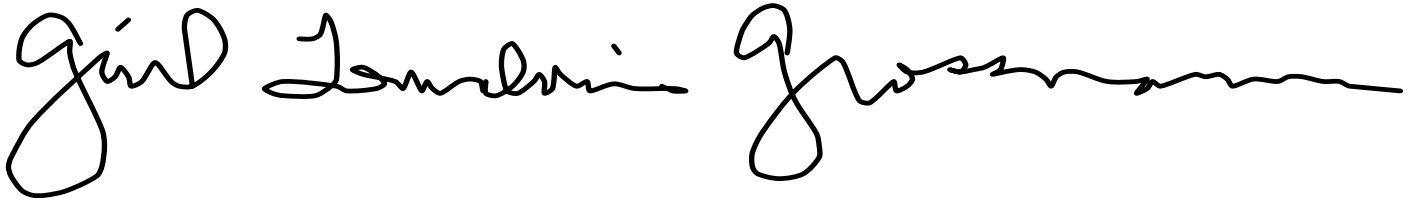
11. Have you or any of your immediate family members or any persons who live with you in your house had an interest in or engaged in a transaction with the charter school during the time you have served on the board, and in the six-month period prior to such service?

No

12. Are you a member, director, officer or employee of an organization formally partnered with a school that is doing business with the charter school and in which such entity, during your tenure as a trustee, you and/or your immediate family member or person living in your house had a financial interest or relationship?

No

Signature of Trustee

A handwritten signature in black ink, reading "Gird Lemelin Grossman". The signature is written in a cursive style with a large initial "G" and a long horizontal flourish at the end.

Thank you.

Required Form: 2014-15 Appendix E - Trustee Disclosure of Financial Interest Form

Created Thursday, September 24, 2015

<https://nysed.fluidsurveys.com/account/surveys/537586/responses/export//s/Regents-Appendix-E-BOT-Form/fl1d942533e0417866>

Page 1

Please open the link to this form using **Google Chrome** as your browser. Doing so will allow you to input your signature on page 2 of the form. Thank you.

1. TRUSTEE NAME

	First Name	Last Name
Trustee Name	Michael	Hollander

2. *Your Home Address:

2. *Your Home Address: Street Address		
2. *Your Home Address: City/State		
2. *Your Home Address: Zip		

3. *Your Business Address

3. *Your Business Address Street Address		
3. *Your Business Address City/State		
3. *Your Business Address Zip		

4. *Daytime Phone Number:

--

5. *E-mail Address:

--

6. I am a Trustee of a parent education corporation listed below which governs one or more charter schools.

No, I am not.

7. Select the name of the education corporation that operates a single charter school.

NEW HEIGHTS ACADEMY CS (NYC CHANCELLOR) 310600860887

8. Select all positions you have held on the Board:

(check all that apply)

(No response)

9. Are you a trustee and also an employee of the school?

No

10. Are you a trustee and an employee or agent of the management company or institutional partner of the charter school?

No

11. Have you or any of your immediate family members or any persons who live with you in your house had an interest in or engaged in a transaction with the charter school during the time you have served on the board, and in the six-month period prior to such service?

No

12. Are you a member, director, officer or employee of an organization formally partnered with a school that is doing business with the charter school and in which such entity, during your tenure as a trustee, you and/or your immediate family member or person living in your house had a financial interest or relationship?

No

Signature of Trustee

Two handwritten signatures in black ink on a white background. The first signature is on the left, and the second is on the right. Both are written in a cursive style.

Thank you.

Required Form: 2014-15 Appendix E - Trustee Disclosure of Financial Interest Form

Created Thursday, October 15, 2015

<https://nysed.fluidsurveys.com/account/surveys/537586/responses/export//s/Regents-Appendix-E-BOT-Form/2cc90f44e56733cb34>

Page 1

Please open the link to this form using **Google Chrome** as your browser. Doing so will allow you to input your signature on page 2 of the form. Thank you.

1. TRUSTEE NAME

	First Name	Last Name
Trustee Name	Rebeca	Wolfe-Balbuena

2. *Your Home Address:

2. *Your Home Address: Street Address	
2. *Your Home Address: City/State	
2. *Your Home Address: Zip	

3. *Your Business Address

3. *Your Business Address Street Address	
3. *Your Business Address City/State	
3. *Your Business Address Zip	

4. *Daytime Phone Number:

--

5. *E-mail Address:

--

6. I am a Trustee of a parent education corporation listed below which governs one or more charter schools.

No, I am not.

7. Select the name of the education corporation that operates a single charter school.

NEW HEIGHTS ACADEMY CS (NYC CHANCELLOR) 310600860887

8. Select all positions you have held on the Board:

(check all that apply)

- Secretary
- Other, please specify...: Staff Representative

9. Are you a trustee and also an employee of the school?

Yes

9a. If YES, please provide a description of the position you hold and your responsibilities, your salary and your start date.

[TEMP.0] 9a. If YES, please provide a description of the position you hold and your responsibilities, your salary and your start date. Position Held	Middle School Dean
[TEMP.1] 9a. If YES, please provide a description of the position you hold and your responsibilities, your salary and your start date. Responsibilities	Establish and maintain positive student culture; support teachers with strategies for bettering their practice in the domain of classroom management; administer consequences to students who break school rules.
[TEMP.2] 9a. If YES, please provide a description of the position you hold and your responsibilities, your salary and your start date. Salary	\$82K
[TEMP.3] 9a. If YES, please provide a description of the position you hold and your responsibilities, your salary and your start date. Start Date	September 2007

10. Are you a trustee and an employee or agent of the management company or institutional partner of the charter school?

No

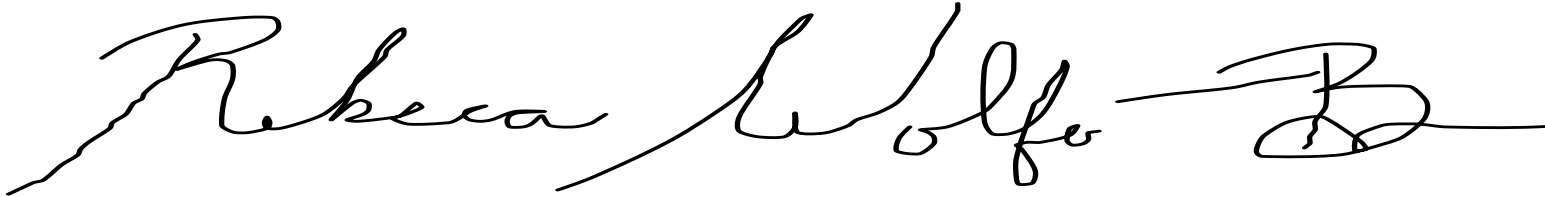
11. Have you or any of your immediate family members or any persons who live with you in your house had an interest in or engaged in a transaction with the charter school during the time you have served on the board, and in the six-month period prior to such service?

No

12. Are you a member, director, officer or employee of an organization formally partnered with a school that is doing business with the charter school and in which such entity, during your tenure as a trustee, you and/or your immediate family member or person living in your house had a financial interest or relationship?

No

Signature of Trustee

A handwritten signature in black ink that reads "Rebecca Wolfe" followed by a stylized flourish or monogram.

Thank you.

Required Form: 2014-15 Appendix E - Trustee Disclosure of Financial Interest Form

Created Saturday, October 24, 2015

<https://nysed.fluidsurveys.com/account/surveys/537586/responses/export//s/Regents-Appendix-E-BOT-Form/afaf325a0aff61fa984>

Page 1

Please open the link to this form using **Google Chrome** as your browser. Doing so will allow you to input your signature on page 2 of the form. Thank you.

1. TRUSTEE NAME

	First Name	Last Name
Trustee Name	Quincy	McLain

2. *Your Home Address:

2. *Your Home Address: Street Address	
2. *Your Home Address: City/State	
2. *Your Home Address: Zip	

3. *Your Business Address

3. *Your Business Address Street Address	
3. *Your Business Address City/State	
3. *Your Business Address Zip	

4. *Daytime Phone Number:

--

5. *E-mail Address:

--

6. I am a Trustee of a parent education corporation listed below which governs one or more charter schools.

No, I am not.

7. Select the name of the education corporation that operates a single charter school.

NEW HEIGHTS ACADEMY CS (NYC CHANCELLOR) 310600860887

8. Select all positions you have held on the Board:

(check all that apply)

- Treasurer
-

9. Are you a trustee and also an employee of the school?

No

10. Are you a trustee and an employee or agent of the management company or institutional partner of the charter school?

No

11. Have you or any of your immediate family members or any persons who live with you in your house had an interest in or engaged in a transaction with the charter school during the time you have served on the board, and in the six-month period prior to such service?

No

12. Are you a member, director, officer or employee of an organization formally partnered with a school that is doing business with the charter school and in which such entity, during your tenure as a trustee, you and/or your immediate family member or person living in your house had a financial interest or relationship?

No

Signature of Trustee

Thank you.

Required Form: 2014-15 Appendix E - Trustee Disclosure of Financial Interest Form

Created Monday, October 26, 2015

<https://nysed.fluidsurveys.com/account/surveys/537586/responses/export//s/Regents-Appendix-E-BOT-Form/8c1da3c749fc251819>

Page 1

Please open the link to this form using **Google Chrome** as your browser. Doing so will allow you to input your signature on page 2 of the form. Thank you.

1. TRUSTEE NAME

	First Name	Last Name
Trustee Name	Edna	Santiago

2. *Your Home Address:

2. *Your Home Address: Street Address	
2. *Your Home Address: City/State	
2. *Your Home Address: Zip	

3. *Your Business Address

3. *Your Business Address Street Address	
3. *Your Business Address City/State	
3. *Your Business Address Zip	

4. *Daytime Phone Number:

--

5. *E-mail Address:

--

6. I am a Trustee of a parent education corporation listed below which governs one or more charter schools.

No, I am not.

7. Select the name of the education corporation that operates a single charter school.

NEW HEIGHTS ACADEMY CS (NYC CHANCELLOR) 310600860887

8. Select all positions you have held on the Board:

(check all that apply)

-
- Parent Representative
-

9. Are you a trustee and also an employee of the school?

No

10. Are you a trustee and an employee or agent of the management company or institutional partner of the charter school?

No

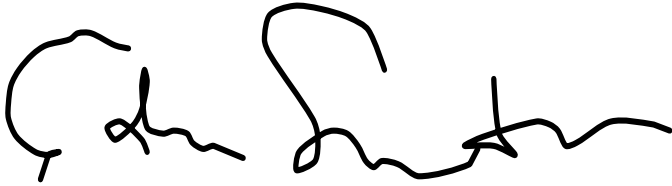
11. Have you or any of your immediate family members or any persons who live with you in your house had an interest in or engaged in a transaction with the charter school during the time you have served on the board, and in the six-month period prior to such service?

No

12. Are you a member, director, officer or employee of an organization formally partnered with a school that is doing business with the charter school and in which such entity, during your tenure as a trustee, you and/or your immediate family member or person living in your house had a financial interest or relationship?

No

Signature of Trustee

A handwritten signature in black ink, appearing to be 'John Smith', written in a cursive style.

Thank you.